

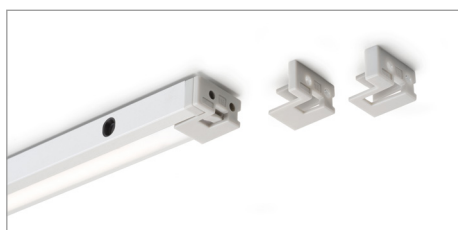




BASKI SHE IR

with proximity sensor/s

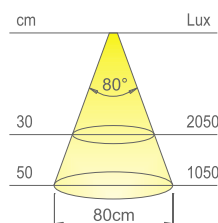
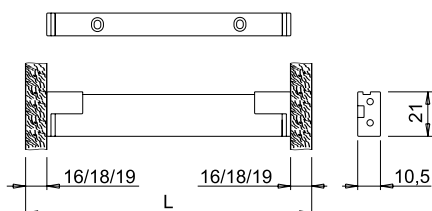
Length	Watt	Volt
450 mm	5,3 W	24VDC
500 mm	6,2 W	24VDC
600 mm	7,2 W	24VDC
800 mm	10,1 W	24VDC
900 mm	12,0 W	24VDC
1000 mm	12,9 W	24VDC
1200 mm	16,3 W	24VDC



The spacer holders for installation on the sides of the unit with 16 mm, 18 mm and 19 mm thickness are provided as standard.



Holders for installation under the top or behind the central frame column are available on request.



* values referred to BASKI SHE 1200mm

Colour appearance	warm white	natural white
Colour temperature	3000 K	4000 K
Luminous flux	1080 lm/m	1080 lm/m
Luminous efficiency	75 lm/W	75 lm/W
CRI	Ra ≥ 80	Ra ≥ 80

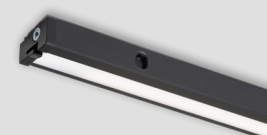
BASKI

LED profile for kitchen units

BASKI is a luminaire with symmetrical light projection, recommended for use inside units with pull-out elements or swing doors. The profile, just 10 mm thick, in natural anodised aluminium or matt black finish, integrates an infra-red sensor that automatically turns on and off when the cabinet is opened and closed. The sizes from 800 mm to 1200 mm integrate two sensors that ensure the lamp turns on when either one of the two swing doors on the units is opened. BASKI can be installed on the sides of the unit frame with 16 mm, 18 mm and 19 mm thickness. Holders for installation under the top or behind the central frame column are available on request. BASKI integrates a flexible module with 180 LED/m Osram© and adhesive base, configured with 2000 mm power cord and finished cable duct. Power supply not included. To be ordered separately.



aluminium



black