

TOUCH ME 2.0

dimnable touch switch

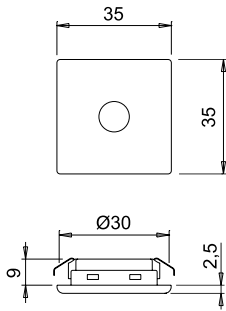
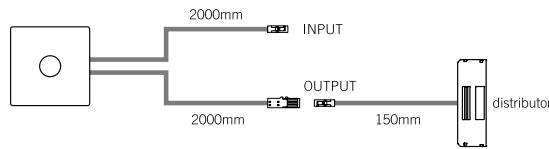


Code	Input	Output	Power	Connectors
17492_ _	24Vdc	24Vdc	60W	Micro24
17507_ _	12-24Vdc	12-24Vdc	30-60W	Micro12-Micro24

Code	Finish
01	white
10	aluminium
46	black touch
50	dark stainless



Turn on or off simply with a quick touch. The brightness is adjusted with a long touch (dimmer function) and is then stored until the next adjustment (memory function).



Consult the installation manual for more details on drilling holes for assembly.



white



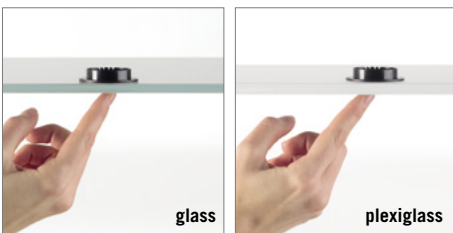
aluminium



black touch



wood



glass

plexiglass

CAPSENS 2.0

dimnable touch switch



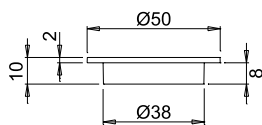
Code	Input	Output	Power	Connectors
1749303	24Vdc	24Vdc	60W	Micro24
1750603	12-24Vdc	12-24Vdc	30-60W	Micro12-Micro24



Turn on and off simply by touching with the surface over the CAPSENS. Touch for longer to adjust light intensity (dimmer function). The luminaire connected to CAPSENS will blink rapidly once to indicate that maximum brightness has been reached. The brightness level will be stored until the next reset (level memory).

Material	Max. thickness
wood	30mm
plexiglass	20mm
glass	12mm

Indicative only.
For more details see:
www.domusline.com



Consult the installation manual for more details on drilling holes for assembly.

