



D-POWER-1 30 W

D-POWER-1 60 W

D-POWER-1 30/12R

12V SEC

TYPE M12 CE 12VDC MAX 3A - 30W

PRI: 220-240Vac, 50/60Hz, 0.17A, cos (φ) 0.95
SEC: 12Vdc, 0-2.5A, 30W max.
ta: -20...+45°C tc: 85°C

D-POWER-1 30/24D

24V SEC

TYPE M24 CE 24VDC MAX 3A - 30W

PRI: 220-240Vac, 50/60Hz, 0.17A, cos (φ) 0.95
SEC: 24Vdc, 0-1.25A, 30W max.
ta: -20...+45°C tc: 85°C

D-POWER-1 60/12R

12V SEC

TYPE M12 CE 12VDC MAX 5A - 60W

PRI: 220-240Vac, 50/60Hz, 0.32A, cos (φ) 0.95
SEC: 12Vdc, 0-5A, 60W max.
ta: -20...+45°C tc: max. 85°C

D-POWER-1 60/24D

24V SEC

TYPE M24 CE 24VDC MAX 3A - 60W

PRI: 220-240Vac, 50/60Hz, 0.32A, cos (φ) 0.95
SEC: 24Vdc, 0-2.5A, 60W max.
ta: -20...+45°C tc: max. 85°C

To protect the environment, do not throw the instrument with the normal waste at the end of his life, but bring it to the specific points of collection for this waste foreseen by the norm.

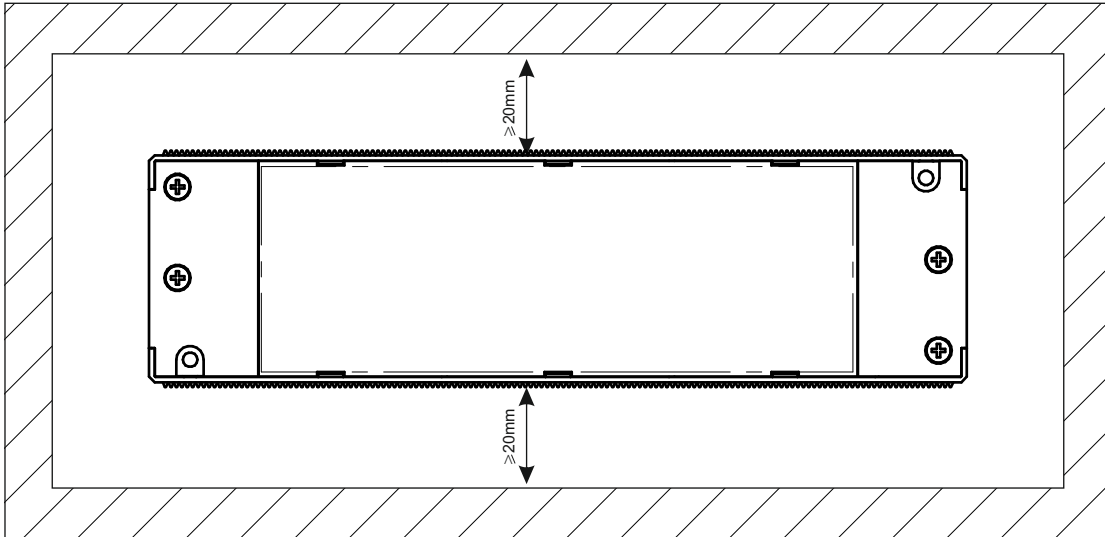
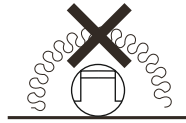
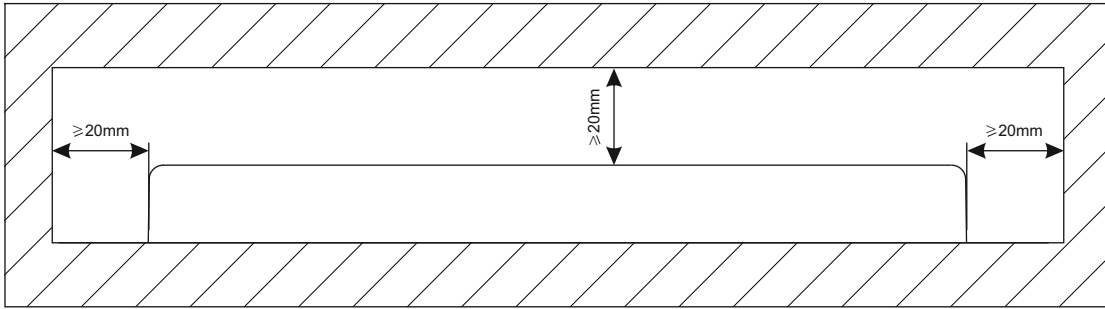
D-POWER-1

IM0011000020_r2.p.1/2



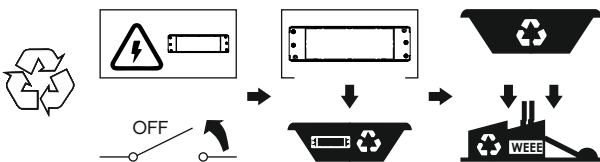
D-POWER-1

FOR AUSTRALIA AND NEW ZEALAND



Do-not-cover

An independent controlgear that can be used where normally flammable materials, including building insulation, are or may be present, but cannot be abutted against any material and cannot be covered in normal use.



To protect the environment, do not throw the instrument with the normal waste at the end of his life, but bring it to the specific points of collection for this waste foreseen by the norm.

