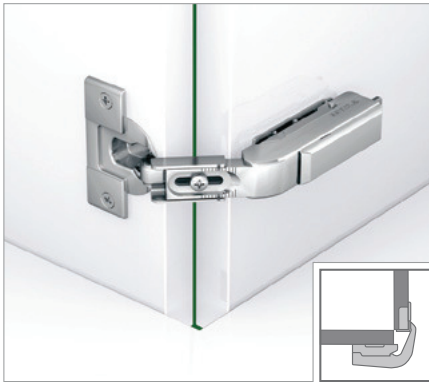


TIOMOS PCC

Pie-cut corner hinge



- For connecting two corner cabinet doors
- For door thicknesses up to max. 24 mm (factory setting for 19 mm door thickness for a cup distance of 3.5 mm)
- 35 mm full cup drill hole
- Shallow cup depth of 11.8 mm
- 3-dimensional adjustment with appropriate mounting plate
- Without integrated damper

Available in 1 version:

- Without integrated damper

ORDER INFORMATION FOR DRILLING PATTERN 45/9.5

Door overlay		Damper		without spring	Item No.	
		with	without		Click-on For screw fixing	Click-on For press fitting
1		-	■	-	F045 1385 17	F045 1385 18

¹ Cup material: steel, nickel-plated / Arm material: Zamak, nickel-plated

COVER CAPS

	Designation	Cranking	Imprinted/Embossed	Item No.
	Hinge arm cover cap, steel, nickel-plated, not imprinted	0/3/9.5/19	On request	F072 135500
	Hinge arm cover cap, right, steel, nickel-plated, GRASS imprint	0/3/9.5/19	GRASS logo	F072 135550
	Hinge arm cover cap, left, steel, nickel-plated, GRASS imprint	0/3/9.5/19	GRASS logo	F072 135551
	Hinge arm cover cap, steel, long, nickel-plated, not imprinted	0/3	On request	F072 135504
	Hinge cup cover cap, steel, nickel-plated, not imprinted	0/3/9.5/19	-	F072 135503

ACCESSORIES

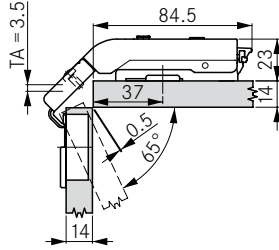
	Designation	Item No.		Designation	Item No.
	Countersunk wood screw Ø 3.5 x 15 mm	F146073976			
	Unclipping protector	F072 135807			

Tiomos mounting plates	102
Accessories	112

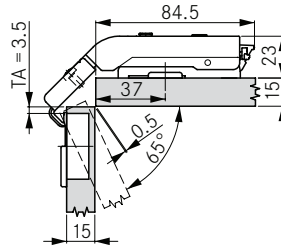
Technical information	116
Assembly aids	364

INSTALLATION INFORMATION

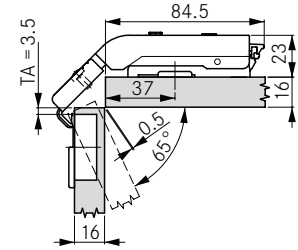
All dimensions in millimetres



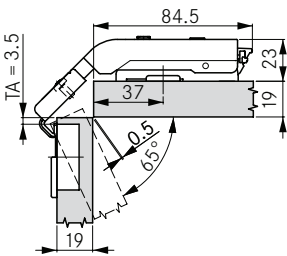
Door thickness (TS) 14 mm
Cup distance (TA) 3.5 mm
Mounting plate height 0



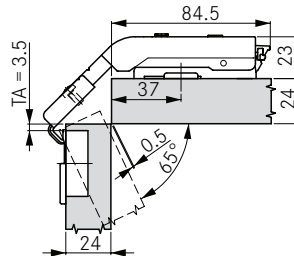
Door thickness (TS) 15 mm
Cup distance (TA) 3.5 mm
Mounting plate height 0



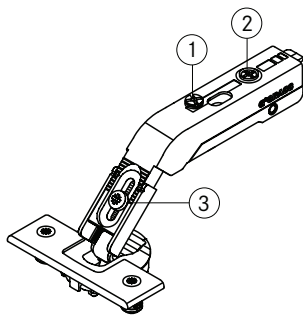
Door thickness (TS) 16 mm
Cup distance (TA) 3.5 mm
Mounting plate height 0



Door thickness (TS) 19 mm (factory setting)
Cup distance (TA) 3.5 mm
Mounting plate height 0



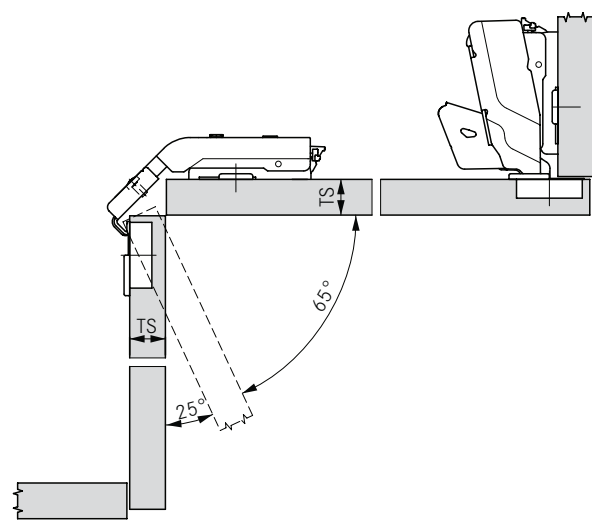
Door thickness (TS) 24 mm
Cup distance (TA) 3.5 mm
Mounting plate height 0



Adjustment in the hinge arm:

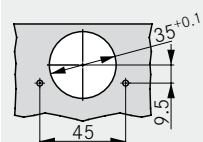
1. Stepless side adjustment ± 2 mm
2. Stepless depth adjustment via worm gear $+ 3/-2$ mm
3. Door thickness 14 - 24 mm (factory setting 19 mm)

Height adjustment via mounting plate

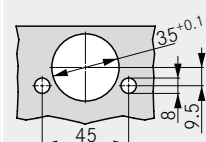


DRILLING PATTERNS 45/9.5

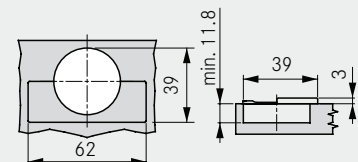
For screw fixing



For press fitting



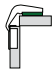
CUP DIMENSIONS



TIOMOS PCC

Pie-cut corner hinge

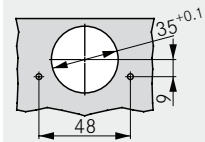
ORDER INFORMATION FOR DRILLING PATTERN 48/9

		Damper			Item No.	
		with	without	without spring	Click-on For screw fixing	Click-on For press fitting
		-	■	-	F045 138091	F045 138092

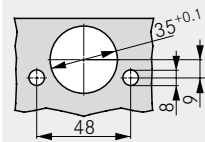
Cup material: Zamak, nickel-plated /Arm material: Zamak, nickel-plated

DRILLING PATTERNS 48/9

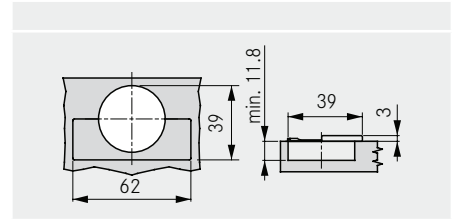
For screw fixing



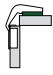
For press fitting



CUP DIMENSIONS



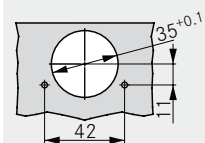
ORDER INFORMATION FOR DRILLING PATTERN 42/11

		Damper			Item No.	
		with	without	without spring	Click-on For screw fixing	Click-on For press fitting
		-	■	-	F045 138335	F045 138336

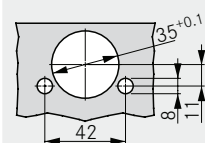
Cup material: Zamak, nickel-plated /Arm material: Zamak, nickel-plated

DRILLING PATTERNS 42/11

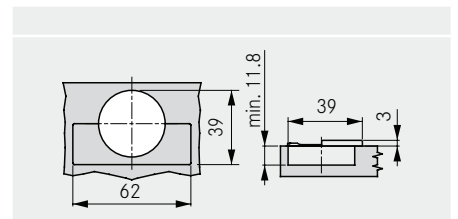
For screw fixing



For press fitting



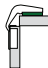
CUP DIMENSIONS



Tiomos mounting plates	102
Accessories	112

Technical information	116
Assembly aids	364

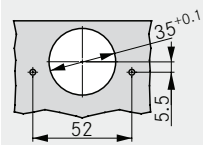
ORDER INFORMATION FOR DRILLING PATTERN 52/5.5

		Damper			Item No.		
		with	without	without spring	Click-on For screw fixing	Click-on For press fitting	
		-	■	-	F045 138699	F045 138700	

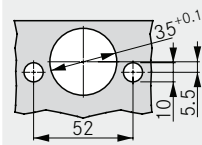
Cup material: Zamak, nickel-plated /Arm material: Zamak, nickel-plated

DRILLING PATTERNS 52/5.5

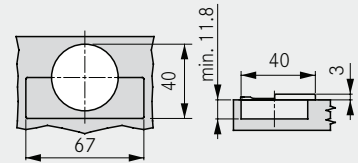
For screw fixing



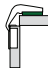
For press fitting



CUP DIMENSIONS



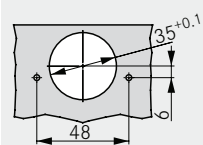
ORDER INFORMATION FOR DRILLING PATTERN 48/6

		Damper			Item No.		
		with	without	without spring	Click-on For screw fixing	Click-on For press fitting	
		-	■	-	F045 138881	F045 138882	

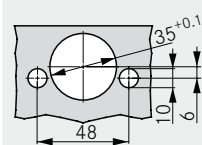
Cup material: Zamak, nickel-plated /Arm material: Zamak, nickel-plated

DRILLING PATTERNS 48/6

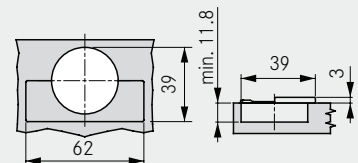
For screw fixing



For press fitting



CUP DIMENSIONS



Tiomos mounting plates	102
Accessories	112

Technical information	116
Assembly aids	364