

HIPSO BH SP D-M

without cover

Watt	Volt
3,8 W	24 VCD



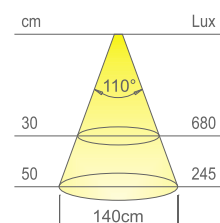
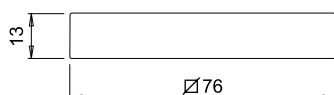
HIPSO TH SP D-M

with cover

Watt	Volt
3,8 W	24 VDC



HIPSO SP integrates a light source that enables the dynamic and gradual selection of the colour temperature of the luminaire. The control systems are supplied separately. The colour temperature of HIPSO SP D-M can also be selected from the HIPSO SP D-M TDM switch.



* values referred to HIPSO D-M

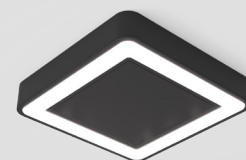
Colour appearance	D-MOTION white
Colour temperature	2700 - 4000 K
Luminous flux	450 Lm
Luminous efficiency	118 lm/W
CRI	Ra ≥ 80

HIPSO SP D-M

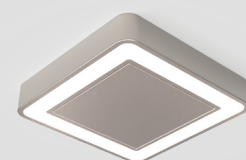
surface LED luminaire

HIPSO SP D-M is a luminaire with perimeter light source integrated in a support installed on the surface, configured with a cover (HIPSO TH SP D-M) or without (HIPSO BH SP D-M). The 2000 mm power cord output with Micro24 connector is axial or radial to the installation surface. Available with painted steel and black touch finishes. Power supply and colour temperature control system not included. To be ordered separately.

Patented



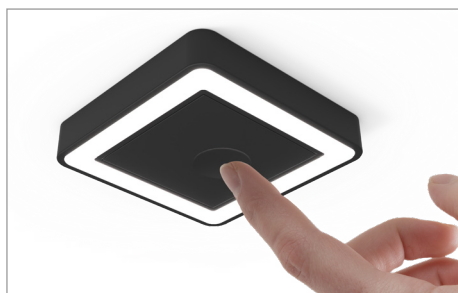
touch black



steel

This product contains a light source of energy efficiency class **E**.





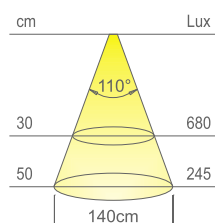
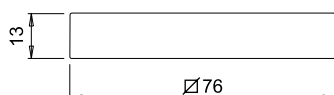
HIPSO SP D-M TDM

with touch dimmer master switch

Watt	Volt
3,8 W	24 VDC



The touch dimmer switch enables the individual luminaire and those connected to the output cable of HIPSO SP D-M TDM to be switched on and off, the brightness to be adjusted (5-100%) and the colour temperature to be selected (2700 K or 4000 K).



* values referred to HIPSO D-M

Colour appearance	D-MOTION white
Colour temperature	2700 - 4000 K
Luminous flux	450 Lm
Luminous efficiency	118 lm/W
CRI	Ra ≥ 80

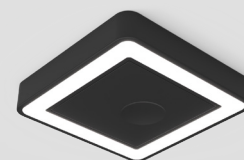
HIPSO SP D-M TDM



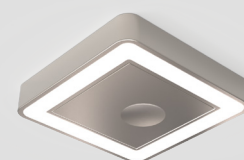
surface LED luminaire with touch dimmer master switch

HIPSO SP D-M TDM is a luminaire with perimeter light source integrated in a support installed on the surface. Configured with touch dimmer master switch, safe even when it comes into contact with wet hands, used to switch on and off, control the brightness and to select the colour temperature from the two available, of the individual luminaire and those connected to the output cable. Available with painted steel and black touch finishes.

Patented



touch black



steel

This product contains a light source of energy efficiency class **E**.