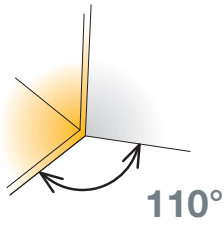
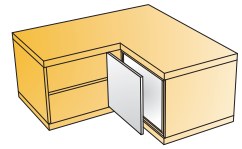


# S-type 110/90°

For wood door cabinets with blind panels



- Opening angle 110°
- Drilling diameter for hinge cup 35mm
- Drilling depth 11.5mm
- Hinge on plate mounting system 'snap-on'



Cranking  
18mm



	Interaxis 45mm	Interaxis 48mm	Interaxis 52mm
Cup type	Item number	Item number	Item number
	248-0745-050	248-0742-050	248-0748-050
	248-0N24-050	248-0N25-050	248-0N26-050
	248-0L61-050	248-0N62-050	248-0Z81-050

Drilling patterns for hinge cups → see page 3.15

100 Pcs

Cup made of steel, arm made of zinc

## Mounting plates



Cam adjustable mounting plate  
→ see page 3.97



Steel mounting plates  
→ see page 3.99



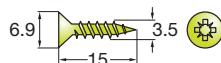
Zinc diecast mounting plates  
→ see page 3.99



Face frame adapters  
→ see page 3.101

## Hinge cup screws

If not pre-mounted



820-6308-050

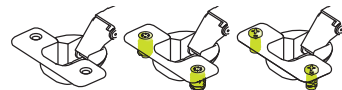
10000 Pcs

## Legend of hinge cup symbols

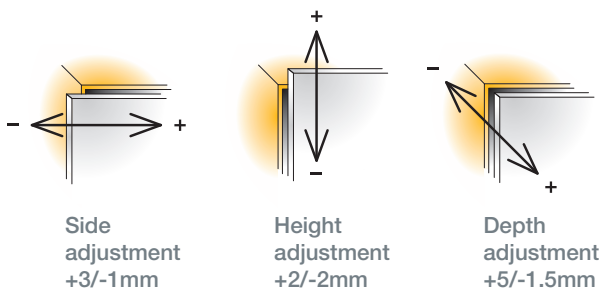
Screw-on ready  
← screws

Machine insertion ready

Easy-fix system



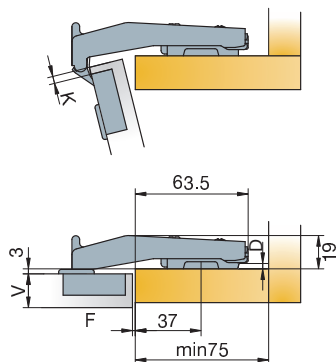
Door adjustment



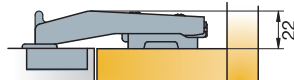
For further explanation → see pages 3.20-3.23

Mounting details

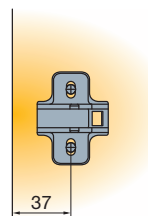
Mounting plate drilling distance



Drawings show application on D=0mm thick mounting plate



Drawings show application on D=3mm thick mounting plate



Soft closing systems



Glissando TL  
→ see page 2.15

Accessories



Cover caps for hinge arm  
→ see page 3.151

Door clearance

For further explanation → see page 3.12



V	16	17	18	19	20	21	22	
3	0.3	0.5	0.7	1.0	1.3	1.7	2.5	
K	4	0.3	0.5	0.7	0.9	1.2	1.6	2.1
	5	0.3	0.5	0.7	0.9	1.2	1.5	2.0

Gap Z<sub>MIN</sub>=0