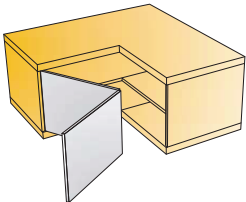


# S-type

## for Pie-cut Corner Cabinet

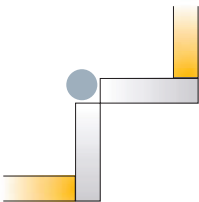
For wood doors



- Opening angle 110°
- Drilling diameter for hinge cup 35mm
- Drilling depth 11.5mm
- Hinge on plate mounting system snap-on



Corner cabinet



	Interaxis 45mm	Interaxis 48mm	Interaxis 52mm
Cup type	Item number	Item number	Item number
	248-0U21-050	248-0U16-050	248-0308-050
	248-0U22-050	248-0V15-050	248-0Z20-050

Drilling patterns for hinge cups → see page 3.15



100 Pcs

Cup made of steel, arm made of zinc

### Mounting plates



Cam adjustable mounting plate  
→ see page 3.113



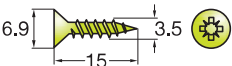
Steel mounting plates  
→ see page 3.115



Zinc diecast mounting plates  
→ see page 3.115

### Hinge cup screws

If not pre-mounted

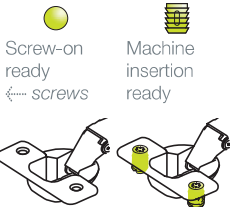


820-6308-050

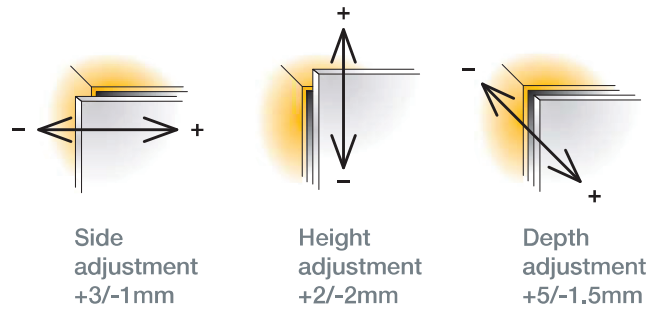


10000 Pcs

### Legend of hinge cup symbols



# Door adjustment

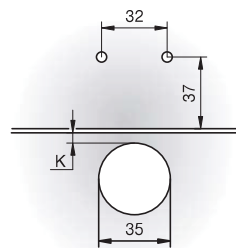
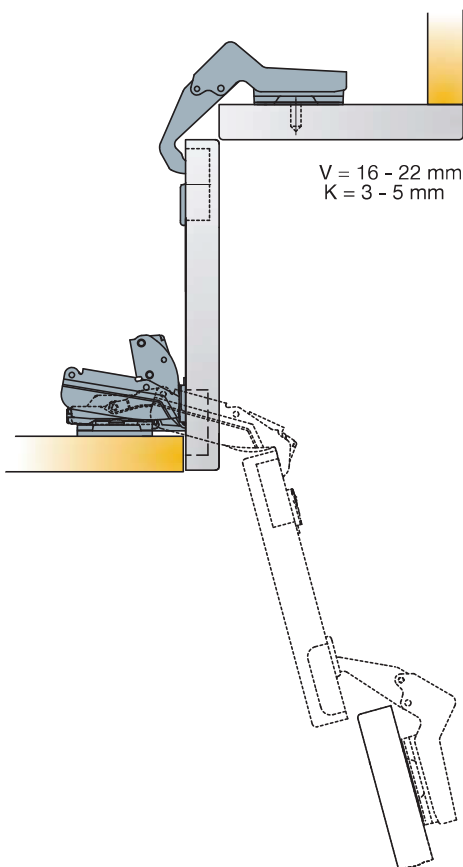


For further explanation → see pages 3.20-3.23

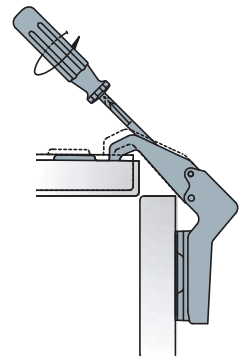
## Mounting details

## Mounting plate drilling distance

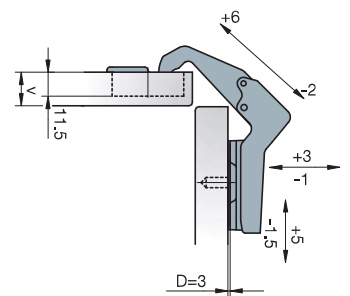
## Adjustments



Any S-type-i mounting plate of thickness  $D=0$  can be used



The diagonal adjustment is made by rotating the appropriate screw as shown on the drawing



## Accessories



Cover caps for hinge arm  
→ see page 3.169