

Nova Pro

Installation

S18315 Nova PRO DL drawer 500mm H=90mm set

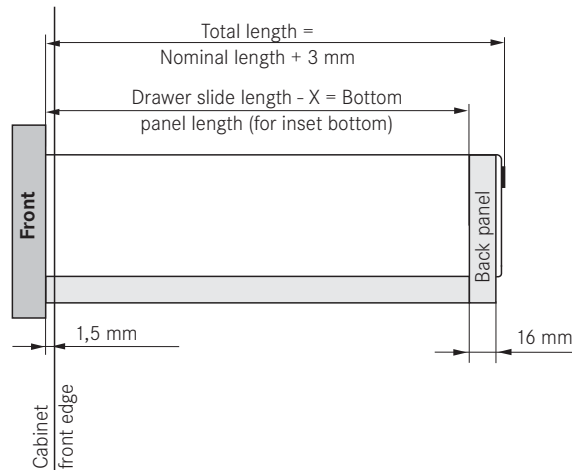
G65015 Decor Nova PRO DL 500mm,h=90mm metallic	1 pair
G63668 Cab.member PRO 500mm, 40kg load capacity, full extension	1 pair
G27330 Cover cap for Nova PRO DL&CL adjustment screws, anthrazit	2 pcs
G25821 U-cover for Nova PRO DL&CL decors, metallic	2 pcs
G21854 Installation hook for Nova PRO, dowelled version	2 pcs

Installation measurements for Nova Pro Deluxe and Classic

Technical information

Installation measurement $58 \pm_{0}^{0.5}$
 Tolerance adjustment ± 1 mm
 Bottom panel thickness 16 mm
 Drawer slide mounting:
 Euro screw dia. 6 mm x 13 mm
 Drill depth - 13 mm

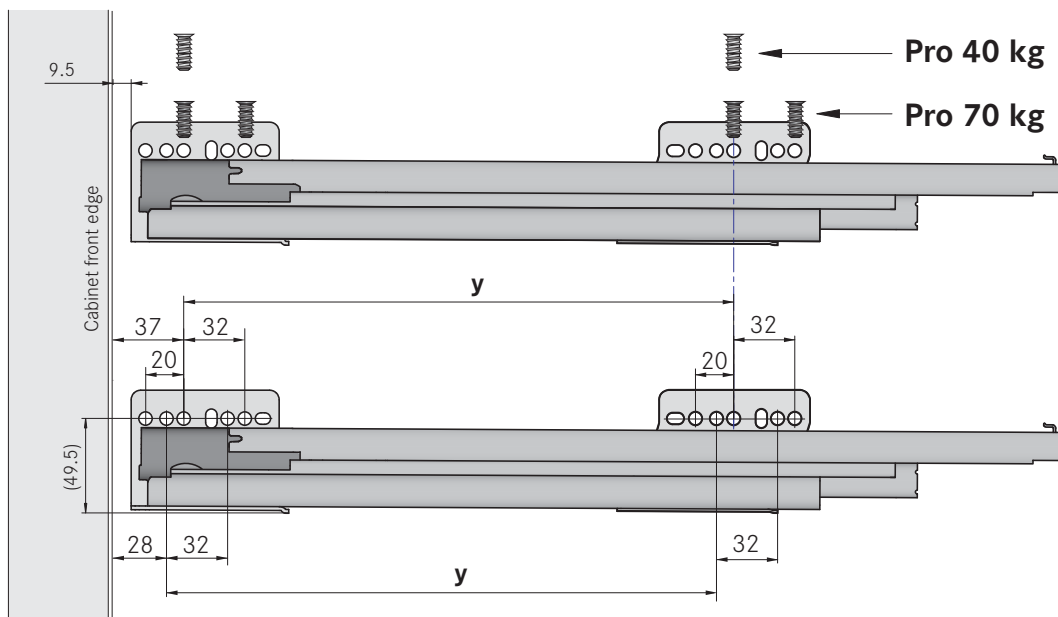
Assembly:



Dimension X

Wooden - back panel X = 19 mm
Steel - back panel X = 13 mm

Screw position for Nova Pro 40 kg and Nova Pro 70 kg



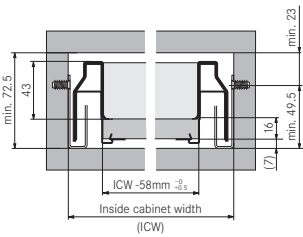
	Drawer length			
	270 mm	300 - 400 mm	450 - 600 mm	650 mm
Measurement y	160 mm	224 mm	288 mm	352 mm

If the chipboard quality corresponds to the resistance to axial withdrawal of screws described in DIN EN 320 (>1.000 N), we recommend using the Ø 6 x 13 mm standard Euro screw for fastening according to the pattern shown above. Fastening methods which differ from the specification are to be tested by the furniture manufacturer

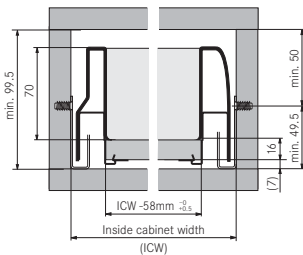
Installation measurements for Nova Pro Deluxe, Classic and Crystal

Dimensional sketch

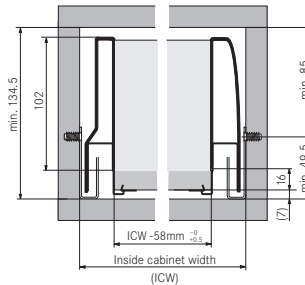
Height 63 mm
Classic



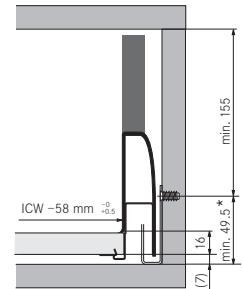
Height 90 mm
Classic / Deluxe



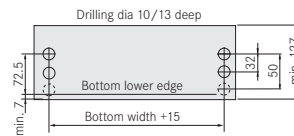
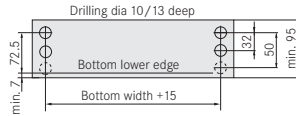
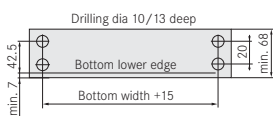
Height 122 mm
Classic / Deluxe



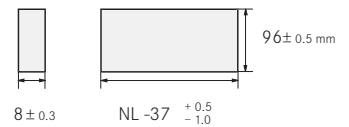
Height 90 mm
Deluxe Crystal



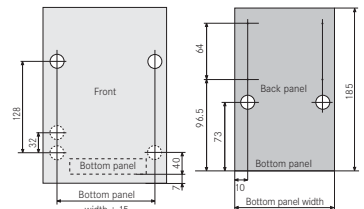
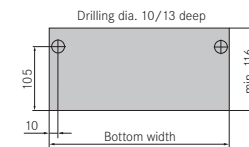
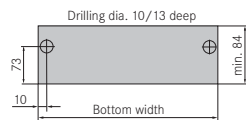
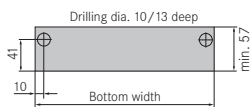
Front



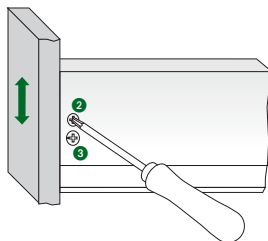
Glass:



Back panel

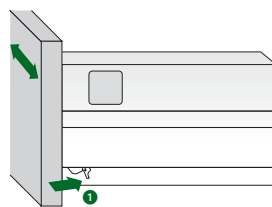


Height adjustment with eccentric screw



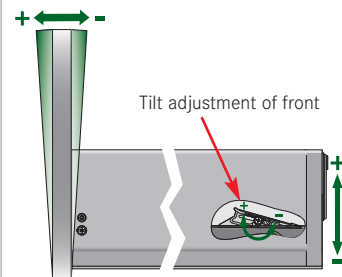
Height adjustment: Loosen screw ② slightly and position front at the required height by means of eccentric screw ③. Adjustment ± 2 mm. Tighten screw ②.

Side adjustment



Side adjustment: Push clamping lever on both sides ① to the back slightly, slightly raise front and slide over ribs, adjustment ± 1.5 mm. Release clamping lever.

Tilt adjustment of front



New for drawer sides height 122
Readily accessible tilt adjustment facility on the inside of the drawer sides. The tilt adjustment is achieved by angling the drawer (± 2mm).

* If Nova Pro Crystal is used for internal fronts (front FL) = min. 52.5 mm

Benefits for your assemblers

Simple installing and removing

The Nova drawers can be installed or removed with just one movement (with no levers to press).

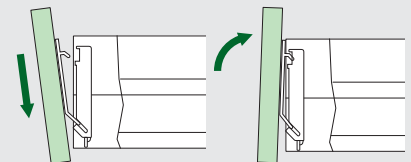
Front installation + removal (tool-free)

The drawer front panel can be attached or removed with one movement. Simple and tool-free!



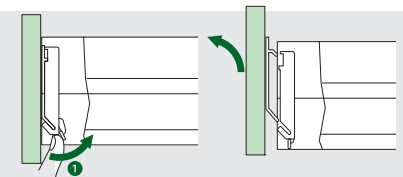
Assembly

1. Angle the front panel with the installation hooks into the lower slanted slot. (0-positioning with the installation hooks).
2. Tilt the front in and...
3. ...Press down.



Removing

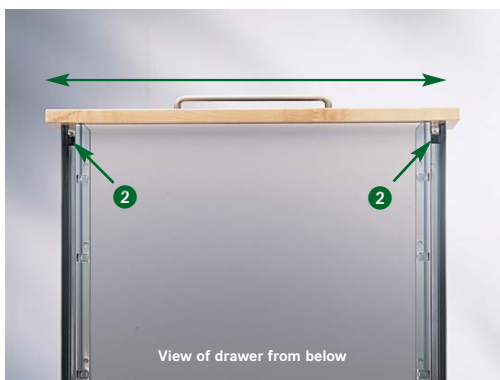
1. Press the catch ① and ...
2. ... Remove front panel.



Installation

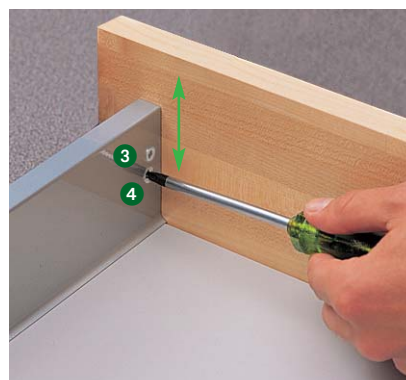
Tool-free side adjustment

1. Press the catch hooks ② (left and right) to the back.
2. Lift the front up slightly and slide over the ribs.



Height adjustment

Slightly loosen screw ③ and slide the front with the eccentric screw ④ into the desired height position. Adjustment range ± 2 mm. Tighten screw ③.



Tilt adjustment of front

New for drawer side height 122 mm

Readily accessible tilt adjustment facility on the inside of the drawer side. The tilt adjustment is achieved by angling the drawer.

