

KINVARO

T-76 lift-up flap fitting



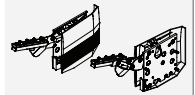
- Variable opening angle - holds flap securely at any angle between 45° and 110°
- Extremely comfortable opening thanks to spring-supported opening mechanism
- Adjustable spring force
- Integrated adjustable closing damper
- Flap 3-dimensionally adjustable - height, side, angle: direct adjustment ±1.5 mm
- No hinges fitted to the top panel
- Allows additional cabinet installation above
- Can be used for wooden flaps or aluminium frames with glass infill
- Fast, tool-free clip fitting of the front
- Weight 5.2 to 11.0 kg
- Range of flaps:
Width: to 1200 mm
Height: 400 – 600 mm
- Cover caps in white and grey, similar to RAL 7045

APPLICATION RANGE

Cabinet height	Flap weight incl. handle (kg)
	Spring, standard
400	7.0 – 11.0
450	6.7 – 9.6
500	5.8 – 8.5
550	5.6 – 7.6
600	5.2 – 7.0

ORDER INFORMATION

Kinvaro T-76 set



Designation	Springs	Version for	Overlay	Art.-no.	
				Cover cap white	Cover cap grey
Kinvaro T-76 on right without damper and on left with damper, pre-assembled springs standard, incl. cover caps	standard	wood	variable	F151147817	F151147706

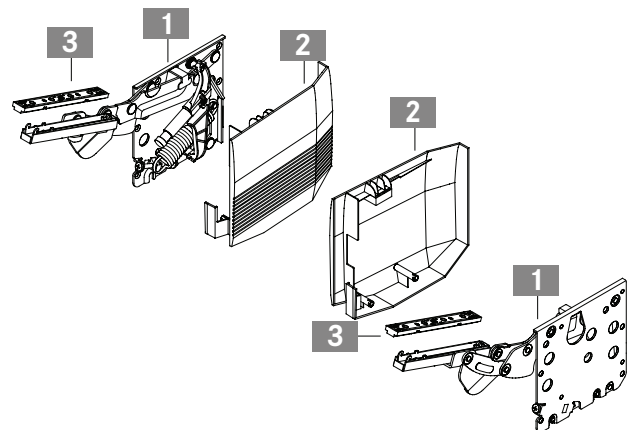
Aluminium frame adapter, Kinvaro T-76 set



Designation	Overlay	Art.-no.
Aluminium frame adapter (2x) for narrow aluminium frames (19 mm) with fixing screws (16x)	13 – 17	F151145226

Kinvaro T-76 set comprises:

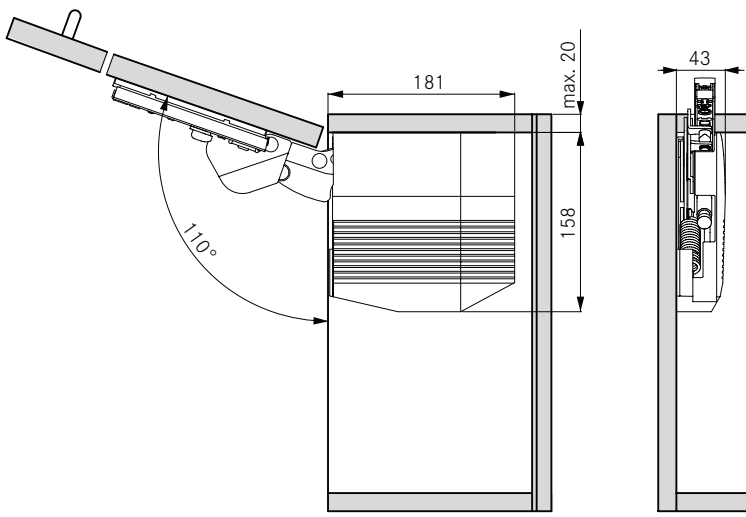
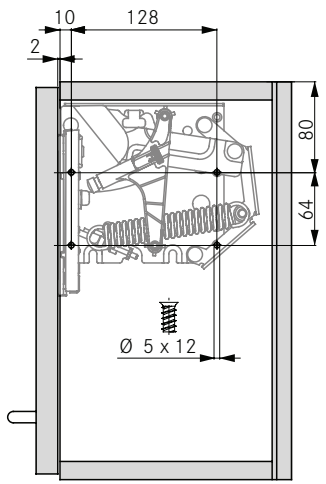
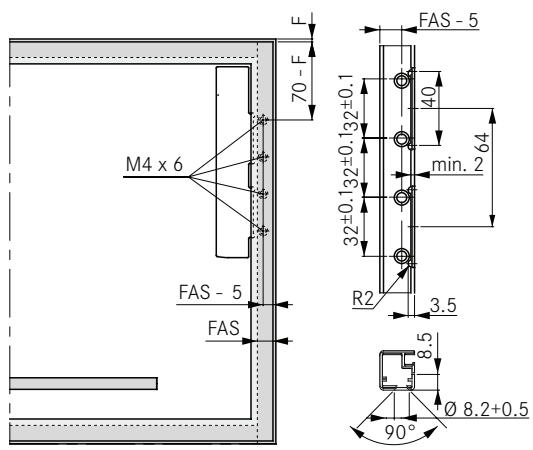
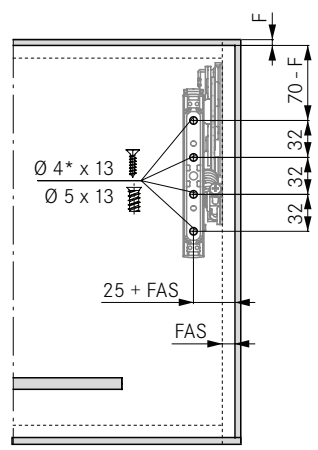
- 1 Fitting on the right without and on the left with damper (1x)
- 2 Cover caps on right and left (1x)
- 3 Mounting plates (2x)
Paper template (1x)
Installation instructions (1x)



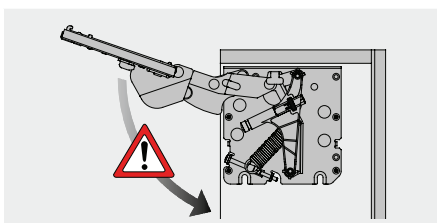
Assembly aids	50		
Kinvaro T-76 adjustment options	44		

ASSEMBLY AND INSTALLATION INSTRUCTIONS

All dimensions in millimetres

<p>Required space</p> 	<p>Side wall drilling positions</p> 
<p>Front: installation for flaps with standard aluminium frame profiles (19 mm)</p> 	<p>Front: installation for wooden and frame flaps (min. 55 mm width)</p>  <p>* Pre-drilling required - Ø 2 mm</p>
<p>Calculation of flap weight</p> <p>Flap width x flap height x flap thickness x density¹ + weight of handle² = weight of flap</p> <p>¹ Densities: MDF 0.85 kg/dm³, chipboard 0.65 kg/dm³, spruce/pine 0.45 kg/dm³</p> <p>² For bar handles allow 0.1 kg for each 100 mm handle width. We recommend a trial fitting</p>	

WARNING



Important!
Caution - risk of injury!
Fitting is spring-tensioned!

LEGEND

F Reveal
FAS Front overlay, side