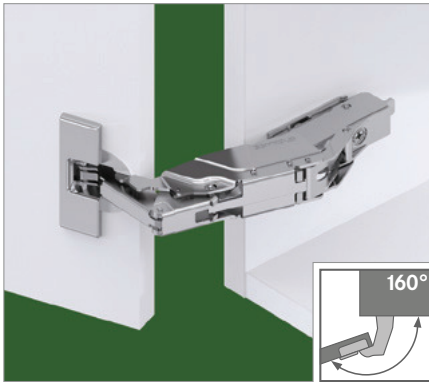


TIOMOS 160

160° wide-angle hinge (door thicknesses up to 32 mm)



- 160° opening angle
- Convenient depth adjustment via worm gear
- For cabinets with inset drawers or pull-out shelves
- Optimum reveals for door thicknesses up to 32 mm
- 3-dimensional adjustment with appropriate mounting plate
- Minimum reveals
- Shallow cup depth

Available in 3 versions:

- With integrated damper (3 adjustable damping levels)
- Without integrated damper
- Without self-closing mechanism (without spring)

ORDER INFORMATION FOR DRILLING PATTERN 45/9.5

Door overlay	Cranking	Damper		without spring	Art.-no.		
		with	without		Click-on For screw fixing	Click-on For press fitting	Impresso without tools
Full overlay ¹	0	■	-	-	F028138561	F028138564	F017139350
		-	■	-	F045138499	F045138502	F034139321
		-	■	■	F046138621	-	F035139378
Overlay ¹	3	■	-	-	F028138562	F028138565	F017139351
		-	■	-	F045138500	F045138503	F034139322
		-	■	■	F046138622	-	F035139379
Half overlay ¹	9.5	■	-	-	F028138563	F028138566	F017139352
		-	■	-	F045138501	F045138504	F034139323
		-	■	■	F046138623	-	F035139380

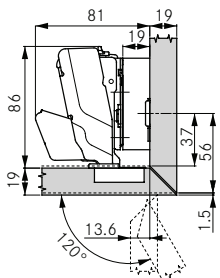
¹ Cup material: Zamak, nickel-plated / Arm material: Zamak, nickel-plated

ACCESSORIES

	Designation	Art.-no.
	120° opening angle reduction clip	F072135753
	Tipmatic Pin for wooden and aluminium frame doors	F069135396

	Designation	Art.-no.
	Countersunk wood screw Ø 3.5 x 15 mm	F146073976
	Unclipping protector	F072135807

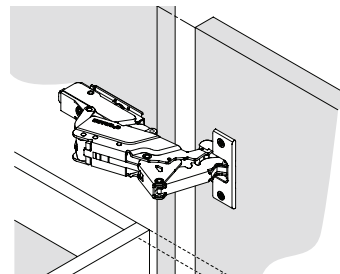
MITRED APPLICATION (ON ALL SIDES)



With 0 cranking, mounting plate height 19 mm and cup distance 4 mm, door and cabinet edges can meet at mitred angles on all 4 sides.

Use 120° opening angle reduction clip.

ZERO PROTRUSION



For cabinets with inset drawers.

At 0 cranking, and with all mounting plate thicknesses, the door protrudes inwards at 90°. With cranking size 3 and mounting plate height 3 mm, the door will be flush with the cabinet.

Door thickness (TS)	Mitred application circumferential	Mitred application lateral
	R (min.)	R (min.)
19-20	1.0	0
22	2.0	0
24	3.0	1.0
26	4.2	2.5
28	5.4	3.8
30	6.5	5.3

Tiomos mounting plates	80	Tipmatic	278	Assembly aids	332
Accessories	90	Technical information	94		

INSTALLATION INFORMATION

All dimensions in millimetres

Full overlay	K0	Overlay	K3	Half overlay	K9.5	Inset ¹	K0																																																																																																																																																																																																																																																																																																																																																																																																																																																																																																																																																																																																																																																			
Mounting plate height 2		Mounting plate height 2		Mounting plate height 2		Cranking 0, mounting plate height 21 ¹ Set mounting plate back by door thickness + 1.5 mm																																																																																																																																																																																																																																																																																																																																																																																																																																																																																																																																																																																																																																																				
<table border="1"> <thead> <tr><th colspan="2">Cup distance</th></tr><tr><th>0</th><th>Cup distance</th></tr> </thead> <tbody> <tr><td>3</td><td></td></tr><tr><td>4</td><td></td></tr><tr><td>5</td><td></td></tr><tr><td>6</td><td></td></tr><tr><td>7</td><td></td></tr><tr><td>8</td><td></td></tr><tr><td>9</td><td></td></tr><tr><td>10</td><td></td></tr> </tbody> </table>	Cup distance		0	Cup distance	3		4		5		6		7		8		9		10			<table border="1"> <thead> <tr><th colspan="2">Cup distance</th></tr><tr><th>3</th><th>Cup distance</th></tr> </thead> <tbody> <tr><td>3</td><td></td></tr><tr><td>4</td><td></td></tr><tr><td>5</td><td></td></tr><tr><td>6</td><td></td></tr><tr><td>7</td><td></td></tr><tr><td>8</td><td></td></tr><tr><td>9</td><td></td></tr><tr><td>10</td><td></td></tr> </tbody> </table>	Cup distance		3	Cup distance	3		4		5		6		7		8		9		10			<table border="1"> <thead> <tr><th colspan="2">Cup distance</th></tr><tr><th>9.5</th><th>Cup distance</th></tr> </thead> <tbody> <tr><td>3</td><td></td></tr><tr><td>4</td><td></td></tr><tr><td>5</td><td></td></tr><tr><td>6</td><td></td></tr><tr><td>7</td><td></td></tr><tr><td>8</td><td></td></tr><tr><td>9</td><td></td></tr><tr><td>10</td><td></td></tr> </tbody> </table>	Cup distance		9.5	Cup distance	3		4		5		6		7		8		9		10		<table border="1"> <thead> <tr><th colspan="2">Cup distance</th></tr><tr><th>0</th><th>Cup distance</th></tr> </thead> <tbody> <tr><td>3</td><td></td></tr><tr><td>4</td><td></td></tr><tr><td>5</td><td></td></tr><tr><td>6</td><td></td></tr> </tbody> </table>	Cup distance		0	Cup distance	3		4		5		6																																																																																																																																																																																																																																																																																																																																																																																																																																																																																																																																																																														
Cup distance																																																																																																																																																																																																																																																																																																																																																																																																																																																																																																																																																																																																																																																										
0	Cup distance																																																																																																																																																																																																																																																																																																																																																																																																																																																																																																																																																																																																																																																									
3																																																																																																																																																																																																																																																																																																																																																																																																																																																																																																																																																																																																																																																										
4																																																																																																																																																																																																																																																																																																																																																																																																																																																																																																																																																																																																																																																										
5																																																																																																																																																																																																																																																																																																																																																																																																																																																																																																																																																																																																																																																										
6																																																																																																																																																																																																																																																																																																																																																																																																																																																																																																																																																																																																																																																										
7																																																																																																																																																																																																																																																																																																																																																																																																																																																																																																																																																																																																																																																										
8																																																																																																																																																																																																																																																																																																																																																																																																																																																																																																																																																																																																																																																										
9																																																																																																																																																																																																																																																																																																																																																																																																																																																																																																																																																																																																																																																										
10																																																																																																																																																																																																																																																																																																																																																																																																																																																																																																																																																																																																																																																										
Cup distance																																																																																																																																																																																																																																																																																																																																																																																																																																																																																																																																																																																																																																																										
3	Cup distance																																																																																																																																																																																																																																																																																																																																																																																																																																																																																																																																																																																																																																																									
3																																																																																																																																																																																																																																																																																																																																																																																																																																																																																																																																																																																																																																																										
4																																																																																																																																																																																																																																																																																																																																																																																																																																																																																																																																																																																																																																																										
5																																																																																																																																																																																																																																																																																																																																																																																																																																																																																																																																																																																																																																																										
6																																																																																																																																																																																																																																																																																																																																																																																																																																																																																																																																																																																																																																																										
7																																																																																																																																																																																																																																																																																																																																																																																																																																																																																																																																																																																																																																																										
8																																																																																																																																																																																																																																																																																																																																																																																																																																																																																																																																																																																																																																																										
9																																																																																																																																																																																																																																																																																																																																																																																																																																																																																																																																																																																																																																																										
10																																																																																																																																																																																																																																																																																																																																																																																																																																																																																																																																																																																																																																																										
Cup distance																																																																																																																																																																																																																																																																																																																																																																																																																																																																																																																																																																																																																																																										
9.5	Cup distance																																																																																																																																																																																																																																																																																																																																																																																																																																																																																																																																																																																																																																																									
3																																																																																																																																																																																																																																																																																																																																																																																																																																																																																																																																																																																																																																																										
4																																																																																																																																																																																																																																																																																																																																																																																																																																																																																																																																																																																																																																																										
5																																																																																																																																																																																																																																																																																																																																																																																																																																																																																																																																																																																																																																																										
6																																																																																																																																																																																																																																																																																																																																																																																																																																																																																																																																																																																																																																																										
7																																																																																																																																																																																																																																																																																																																																																																																																																																																																																																																																																																																																																																																										
8																																																																																																																																																																																																																																																																																																																																																																																																																																																																																																																																																																																																																																																										
9																																																																																																																																																																																																																																																																																																																																																																																																																																																																																																																																																																																																																																																										
10																																																																																																																																																																																																																																																																																																																																																																																																																																																																																																																																																																																																																																																										
Cup distance																																																																																																																																																																																																																																																																																																																																																																																																																																																																																																																																																																																																																																																										
0	Cup distance																																																																																																																																																																																																																																																																																																																																																																																																																																																																																																																																																																																																																																																									
3																																																																																																																																																																																																																																																																																																																																																																																																																																																																																																																																																																																																																																																										
4																																																																																																																																																																																																																																																																																																																																																																																																																																																																																																																																																																																																																																																										
5																																																																																																																																																																																																																																																																																																																																																																																																																																																																																																																																																																																																																																																										
6																																																																																																																																																																																																																																																																																																																																																																																																																																																																																																																																																																																																																																																										
<table border="1"> <tbody> <tr><td>27.0</td><td></td><td></td><td></td><td></td><td></td><td></td><td></td><td></td><td>-2</td></tr><tr><td>26.0</td><td></td><td></td><td></td><td></td><td></td><td></td><td>-2</td><td></td><td></td></tr><tr><td>25.0</td><td></td><td></td><td></td><td></td><td></td><td>-2</td><td></td><td>0</td><td></td></tr><tr><td>24.0</td><td></td><td></td><td></td><td></td><td>-2</td><td></td><td></td><td></td><td>0</td></tr><tr><td>23.0</td><td></td><td></td><td></td><td></td><td>-2</td><td></td><td></td><td></td><td>2</td></tr><tr><td>22.0</td><td></td><td>-2</td><td></td><td></td><td></td><td></td><td></td><td>2</td><td>3</td></tr><tr><td>21.0</td><td>-2</td><td></td><td></td><td></td><td></td><td></td><td></td><td>2</td><td>3</td></tr><tr><td>20.0</td><td>-2</td><td></td><td></td><td>0</td><td></td><td></td><td></td><td>2</td><td>3</td></tr><tr><td>19.0</td><td></td><td></td><td></td><td>2</td><td></td><td></td><td></td><td>3</td><td></td></tr><tr><td>18.5</td><td></td><td></td><td></td><td>3.5</td><td></td><td></td><td></td><td></td><td></td></tr><tr><td>18.0</td><td>0</td><td></td><td></td><td>2</td><td></td><td></td><td></td><td>3</td><td></td></tr><tr><td>17.5</td><td></td><td></td><td></td><td>3.5</td><td></td><td></td><td></td><td></td><td></td></tr><tr><td>17.0</td><td>2</td><td></td><td></td><td>3</td><td></td><td></td><td></td><td></td><td></td></tr><tr><td>16.5</td><td></td><td></td><td></td><td>3.5</td><td></td><td></td><td></td><td></td><td></td></tr><tr><td>16.0</td><td>2</td><td></td><td></td><td>3</td><td></td><td></td><td></td><td></td><td></td></tr><tr><td>15.5</td><td></td><td></td><td></td><td>3.5</td><td></td><td></td><td></td><td></td><td></td></tr><tr><td>15.0</td><td>3</td><td></td><td></td><td></td><td></td><td></td><td></td><td></td><td></td></tr><tr><td>14.5</td><td></td><td></td><td></td><td>3.5</td><td></td><td></td><td></td><td></td><td></td></tr> </tbody> </table>	27.0									-2	26.0							-2			25.0						-2		0		24.0					-2				0	23.0					-2				2	22.0		-2						2	3	21.0	-2							2	3	20.0	-2			0				2	3	19.0				2				3		18.5				3.5						18.0	0			2				3		17.5				3.5						17.0	2			3						16.5				3.5						16.0	2			3						15.5				3.5						15.0	3									14.5				3.5							<table border="1"> <tbody> <tr><td>24.0</td><td></td><td></td><td></td><td></td><td></td><td></td><td></td><td></td><td>-2</td></tr><tr><td>23.0</td><td></td><td></td><td></td><td></td><td></td><td></td><td></td><td>-2</td><td></td></tr><tr><td>22.0</td><td></td><td></td><td></td><td></td><td></td><td></td><td></td><td>-2</td><td>0</td></tr><tr><td>21.0</td><td></td><td></td><td></td><td></td><td></td><td></td><td></td><td>-2</td><td>0</td></tr><tr><td>20.0</td><td></td><td></td><td></td><td></td><td></td><td>-2</td><td></td><td></td><td>2</td></tr><tr><td>19.0</td><td></td><td>-2</td><td></td><td></td><td></td><td></td><td></td><td></td><td>3</td></tr><tr><td>18.0</td><td>-2</td><td></td><td></td><td></td><td></td><td></td><td></td><td></td><td>3</td></tr><tr><td>17.0</td><td></td><td></td><td></td><td></td><td></td><td></td><td></td><td>2</td><td>3</td></tr><tr><td>16.5</td><td></td><td></td><td></td><td></td><td></td><td></td><td></td><td>3.5</td><td></td></tr><tr><td>16.0</td><td>0</td><td></td><td></td><td></td><td></td><td></td><td></td><td>2</td><td>3</td></tr><tr><td>15.5</td><td></td><td></td><td></td><td></td><td></td><td></td><td></td><td>3.5</td><td></td></tr><tr><td>15.0</td><td>0</td><td></td><td></td><td>2</td><td></td><td></td><td></td><td>3</td><td></td></tr><tr><td>14.5</td><td></td><td></td><td></td><td>3.5</td><td></td><td></td><td></td><td></td><td></td></tr><tr><td>14.0</td><td>2</td><td></td><td></td><td>3</td><td></td><td></td><td></td><td></td><td></td></tr><tr><td>13.5</td><td></td><td></td><td></td><td>3.5</td><td></td><td></td><td></td><td></td><td></td></tr><tr><td>13.0</td><td>2</td><td></td><td></td><td>3</td><td></td><td></td><td></td><td></td><td></td></tr><tr><td>12.5</td><td></td><td></td><td></td><td>3.5</td><td></td><td></td><td></td><td></td><td></td></tr><tr><td>12.0</td><td>3</td><td></td><td></td><td></td><td></td><td></td><td></td><td></td><td></td></tr><tr><td>11.5</td><td></td><td></td><td></td><td>3.5</td><td></td><td></td><td></td><td></td><td></td></tr> </tbody> </table>	24.0									-2	23.0								-2		22.0								-2	0	21.0								-2	0	20.0						-2			2	19.0		-2							3	18.0	-2								3	17.0								2	3	16.5								3.5		16.0	0							2	3	15.5								3.5		15.0	0			2				3		14.5				3.5						14.0	2			3						13.5				3.5						13.0	2			3						12.5				3.5						12.0	3									11.5				3.5						<table border="1"> <tbody> <tr><td>17.5</td><td></td><td></td><td></td><td></td><td></td><td></td><td></td><td></td><td>-2</td></tr><tr><td>16.5</td><td></td><td></td><td></td><td></td><td></td><td></td><td></td><td>-2</td><td></td></tr><tr><td>15.5</td><td></td><td></td><td></td><td></td><td></td><td></td><td></td><td>-2</td><td>0</td></tr><tr><td>14.5</td><td></td><td></td><td></td><td></td><td></td><td></td><td></td><td>-2</td><td>0</td></tr><tr><td>13.5</td><td></td><td></td><td></td><td></td><td></td><td></td><td></td><td>-2</td><td>0</td></tr><tr><td>12.5</td><td></td><td></td><td></td><td></td><td></td><td></td><td></td><td>0</td><td>2</td></tr><tr><td>11.5</td><td></td><td></td><td></td><td></td><td></td><td></td><td></td><td>0</td><td>2</td></tr><tr><td>10.5</td><td></td><td></td><td></td><td></td><td></td><td></td><td></td><td>2</td><td>3</td></tr><tr><td>10.0</td><td></td><td></td><td></td><td></td><td></td><td></td><td></td><td>3</td><td></td></tr><tr><td>9.5</td><td></td><td></td><td></td><td></td><td></td><td></td><td></td><td>3.5</td><td></td></tr><tr><td>9.0</td><td></td><td></td><td></td><td></td><td></td><td></td><td></td><td>3</td><td></td></tr><tr><td>8.5</td><td></td><td></td><td></td><td></td><td></td><td></td><td></td><td>2</td><td>3</td></tr><tr><td>8.0</td><td></td><td></td><td></td><td></td><td></td><td></td><td></td><td>3</td><td></td></tr><tr><td>7.5</td><td></td><td></td><td></td><td></td><td></td><td></td><td></td><td>3.5</td><td></td></tr><tr><td>7.0</td><td></td><td></td><td></td><td></td><td></td><td></td><td></td><td>3.5</td><td></td></tr><tr><td>6.5</td><td></td><td></td><td></td><td></td><td></td><td></td><td></td><td>2</td><td>3</td></tr><tr><td>6.0</td><td></td><td></td><td></td><td></td><td></td><td></td><td></td><td>3.5</td><td></td></tr><tr><td>5.5</td><td></td><td></td><td></td><td></td><td></td><td></td><td></td><td>3</td><td></td></tr><tr><td>5.0</td><td></td><td></td><td></td><td></td><td></td><td></td><td></td><td>3.5</td><td></td></tr> </tbody> </table>	17.5									-2	16.5								-2		15.5								-2	0	14.5								-2	0	13.5								-2	0	12.5								0	2	11.5								0	2	10.5								2	3	10.0								3		9.5								3.5		9.0								3		8.5								2	3	8.0								3		7.5								3.5		7.0								3.5		6.5								2	3	6.0								3.5		5.5								3		5.0								3.5		<table border="1"> <tbody> <tr><td>0.0</td><td></td><td>19</td><td>21</td><td></td><td></td><td></td><td></td><td></td><td></td></tr><tr><td>0.5</td><td></td><td></td><td></td><td></td><td></td><td></td><td></td><td></td><td></td></tr><tr><td>1.0</td><td>19</td><td></td><td>21</td><td></td><td></td><td></td><td></td><td></td><td></td></tr><tr><td>1.5</td><td></td><td></td><td></td><td></td><td></td><td></td><td></td><td></td><td></td></tr><tr><td>2.0</td><td></td><td>21</td><td></td><td></td><td></td><td></td><td></td><td></td><td></td></tr><tr><td>3.0</td><td>21</td><td></td><td></td><td></td><td></td><td></td><td></td><td></td><td></td></tr><tr><td>4.0</td><td></td><td></td><td></td><td></td><td></td><td></td><td></td><td></td><td></td></tr> </tbody> </table>	0.0		19	21							0.5										1.0	19		21							1.5										2.0		21								3.0	21									4.0									
27.0									-2																																																																																																																																																																																																																																																																																																																																																																																																																																																																																																																																																																																																																																																	
26.0							-2																																																																																																																																																																																																																																																																																																																																																																																																																																																																																																																																																																																																																																																			
25.0						-2		0																																																																																																																																																																																																																																																																																																																																																																																																																																																																																																																																																																																																																																																		
24.0					-2				0																																																																																																																																																																																																																																																																																																																																																																																																																																																																																																																																																																																																																																																	
23.0					-2				2																																																																																																																																																																																																																																																																																																																																																																																																																																																																																																																																																																																																																																																	
22.0		-2						2	3																																																																																																																																																																																																																																																																																																																																																																																																																																																																																																																																																																																																																																																	
21.0	-2							2	3																																																																																																																																																																																																																																																																																																																																																																																																																																																																																																																																																																																																																																																	
20.0	-2			0				2	3																																																																																																																																																																																																																																																																																																																																																																																																																																																																																																																																																																																																																																																	
19.0				2				3																																																																																																																																																																																																																																																																																																																																																																																																																																																																																																																																																																																																																																																		
18.5				3.5																																																																																																																																																																																																																																																																																																																																																																																																																																																																																																																																																																																																																																																						
18.0	0			2				3																																																																																																																																																																																																																																																																																																																																																																																																																																																																																																																																																																																																																																																		
17.5				3.5																																																																																																																																																																																																																																																																																																																																																																																																																																																																																																																																																																																																																																																						
17.0	2			3																																																																																																																																																																																																																																																																																																																																																																																																																																																																																																																																																																																																																																																						
16.5				3.5																																																																																																																																																																																																																																																																																																																																																																																																																																																																																																																																																																																																																																																						
16.0	2			3																																																																																																																																																																																																																																																																																																																																																																																																																																																																																																																																																																																																																																																						
15.5				3.5																																																																																																																																																																																																																																																																																																																																																																																																																																																																																																																																																																																																																																																						
15.0	3																																																																																																																																																																																																																																																																																																																																																																																																																																																																																																																																																																																																																																																									
14.5				3.5																																																																																																																																																																																																																																																																																																																																																																																																																																																																																																																																																																																																																																																						
24.0									-2																																																																																																																																																																																																																																																																																																																																																																																																																																																																																																																																																																																																																																																	
23.0								-2																																																																																																																																																																																																																																																																																																																																																																																																																																																																																																																																																																																																																																																		
22.0								-2	0																																																																																																																																																																																																																																																																																																																																																																																																																																																																																																																																																																																																																																																	
21.0								-2	0																																																																																																																																																																																																																																																																																																																																																																																																																																																																																																																																																																																																																																																	
20.0						-2			2																																																																																																																																																																																																																																																																																																																																																																																																																																																																																																																																																																																																																																																	
19.0		-2							3																																																																																																																																																																																																																																																																																																																																																																																																																																																																																																																																																																																																																																																	
18.0	-2								3																																																																																																																																																																																																																																																																																																																																																																																																																																																																																																																																																																																																																																																	
17.0								2	3																																																																																																																																																																																																																																																																																																																																																																																																																																																																																																																																																																																																																																																	
16.5								3.5																																																																																																																																																																																																																																																																																																																																																																																																																																																																																																																																																																																																																																																		
16.0	0							2	3																																																																																																																																																																																																																																																																																																																																																																																																																																																																																																																																																																																																																																																	
15.5								3.5																																																																																																																																																																																																																																																																																																																																																																																																																																																																																																																																																																																																																																																		
15.0	0			2				3																																																																																																																																																																																																																																																																																																																																																																																																																																																																																																																																																																																																																																																		
14.5				3.5																																																																																																																																																																																																																																																																																																																																																																																																																																																																																																																																																																																																																																																						
14.0	2			3																																																																																																																																																																																																																																																																																																																																																																																																																																																																																																																																																																																																																																																						
13.5				3.5																																																																																																																																																																																																																																																																																																																																																																																																																																																																																																																																																																																																																																																						
13.0	2			3																																																																																																																																																																																																																																																																																																																																																																																																																																																																																																																																																																																																																																																						
12.5				3.5																																																																																																																																																																																																																																																																																																																																																																																																																																																																																																																																																																																																																																																						
12.0	3																																																																																																																																																																																																																																																																																																																																																																																																																																																																																																																																																																																																																																																									
11.5				3.5																																																																																																																																																																																																																																																																																																																																																																																																																																																																																																																																																																																																																																																						
17.5									-2																																																																																																																																																																																																																																																																																																																																																																																																																																																																																																																																																																																																																																																	
16.5								-2																																																																																																																																																																																																																																																																																																																																																																																																																																																																																																																																																																																																																																																		
15.5								-2	0																																																																																																																																																																																																																																																																																																																																																																																																																																																																																																																																																																																																																																																	
14.5								-2	0																																																																																																																																																																																																																																																																																																																																																																																																																																																																																																																																																																																																																																																	
13.5								-2	0																																																																																																																																																																																																																																																																																																																																																																																																																																																																																																																																																																																																																																																	
12.5								0	2																																																																																																																																																																																																																																																																																																																																																																																																																																																																																																																																																																																																																																																	
11.5								0	2																																																																																																																																																																																																																																																																																																																																																																																																																																																																																																																																																																																																																																																	
10.5								2	3																																																																																																																																																																																																																																																																																																																																																																																																																																																																																																																																																																																																																																																	
10.0								3																																																																																																																																																																																																																																																																																																																																																																																																																																																																																																																																																																																																																																																		
9.5								3.5																																																																																																																																																																																																																																																																																																																																																																																																																																																																																																																																																																																																																																																		
9.0								3																																																																																																																																																																																																																																																																																																																																																																																																																																																																																																																																																																																																																																																		
8.5								2	3																																																																																																																																																																																																																																																																																																																																																																																																																																																																																																																																																																																																																																																	
8.0								3																																																																																																																																																																																																																																																																																																																																																																																																																																																																																																																																																																																																																																																		
7.5								3.5																																																																																																																																																																																																																																																																																																																																																																																																																																																																																																																																																																																																																																																		
7.0								3.5																																																																																																																																																																																																																																																																																																																																																																																																																																																																																																																																																																																																																																																		
6.5								2	3																																																																																																																																																																																																																																																																																																																																																																																																																																																																																																																																																																																																																																																	
6.0								3.5																																																																																																																																																																																																																																																																																																																																																																																																																																																																																																																																																																																																																																																		
5.5								3																																																																																																																																																																																																																																																																																																																																																																																																																																																																																																																																																																																																																																																		
5.0								3.5																																																																																																																																																																																																																																																																																																																																																																																																																																																																																																																																																																																																																																																		
0.0		19	21																																																																																																																																																																																																																																																																																																																																																																																																																																																																																																																																																																																																																																																							
0.5																																																																																																																																																																																																																																																																																																																																																																																																																																																																																																																																																																																																																																																										
1.0	19		21																																																																																																																																																																																																																																																																																																																																																																																																																																																																																																																																																																																																																																																							
1.5																																																																																																																																																																																																																																																																																																																																																																																																																																																																																																																																																																																																																																																										
2.0		21																																																																																																																																																																																																																																																																																																																																																																																																																																																																																																																																																																																																																																																								
3.0	21																																																																																																																																																																																																																																																																																																																																																																																																																																																																																																																																																																																																																																																									
4.0																																																																																																																																																																																																																																																																																																																																																																																																																																																																																																																																																																																																																																																										
Door overlay		Door overlay		Door overlay		Door reveal																																																																																																																																																																																																																																																																																																																																																																																																																																																																																																																																																																																																																																																				
Mounting plate height		Mounting plate height		Mounting plate height		Mounting plate height																																																																																																																																																																																																																																																																																																																																																																																																																																																																																																																																																																																																																																																				

MINIMUM GAP

Cup distance	
	3 4 5 6 7 8 9 10
32.0	1.0 1.0
31.0	1.0 1.0 1.0
30.0	1.0 1.0 1.0
29.0	1.0 1.0 1.0 1.0 1.0 1.0 1.0 1.0
28.0	1.0 1.0 1.0 1.0 1.0 1.0 1.0 1.0
26.0	1.0 1.0 1.0 1.0 1.0 1.0 1.0 1.0
25.0	1.0 1.0 1.0 1.0 1.0 1.0 1.0 1.0
24.0	1.0 1.0 1.0 1.0 1.0 1.0 1.0 1.0
22.0	1.0 1.0 1.0 1.0 1.0 1.0 1.0 1.0
21.0	1.0 1.0 1.0 1.0 1.0 1.0 1.0 1.0
20.0	1.0 1.0 1.0 1.0 1.0 1.0 1.0 1.0
18.0	1.0 1.0 1.0 1.0 1.0 1.0 1.0 1.0
16.0	1.0 1.0 1.0 1.0 1.0 1.0 1.0 1.0

MINIMUM REVEAL

Cup distance	
	3 4 5 6 7 8 9 10
32.0	0.2 0.2
31.0	0.2 0.2 0.2 0.2
30.0	0.2 0.2 0.2 0.2 0.2
29.0	0.2 0.2 0.2 0.2 0.2 0.2 0.2 0.2
28.0	0.0 0.0 0.0 0.0 0.0 0.0 0.0 0.0
26.0	0.0 0.0 0.0 0.0 0.0 0.0 0.0 0.0
25.0	0.0 0.0 0.0 0.0 0.0 0.0 0.0 0.0
24.0	0.0 0.0 0.0 0.0 0.0 0.0 0.0 0.0
22.0	0.0 0.0 0.0 0.0 0.0 0.0 0.0 0.0
21.0	0.0 0.0 0.0 0.0 0.0 0.0 0.0 0.0
20.0	0.0 0.0 0.0 0.0 0.0 0.0 0.0 0.0
18.0	0.0 0.0 0.0 0.0 0.0 0.0 0.0 0.0
16.0	0.0 0.0 0.0 0.0 0.0 0.0 0.0 0.0

NOTES

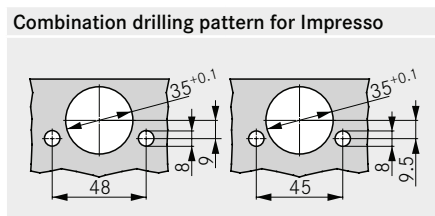
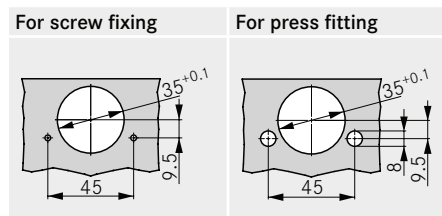
The minimum gap is the clearance required between the front edge of the cabinet and the closed door so that the door can open without hindrance.

Minimum reveal for doors with bevelled edges (R = 1 mm) (factory setting).

No reveal is required for door thicknesses up to 28 mm. From 29 mm door thickness, we recommend a trial fitting.

■ only possible with 120° angle red. clip

DRILLING PATTERNS 45/9.5



CUP DIMENSIONS

