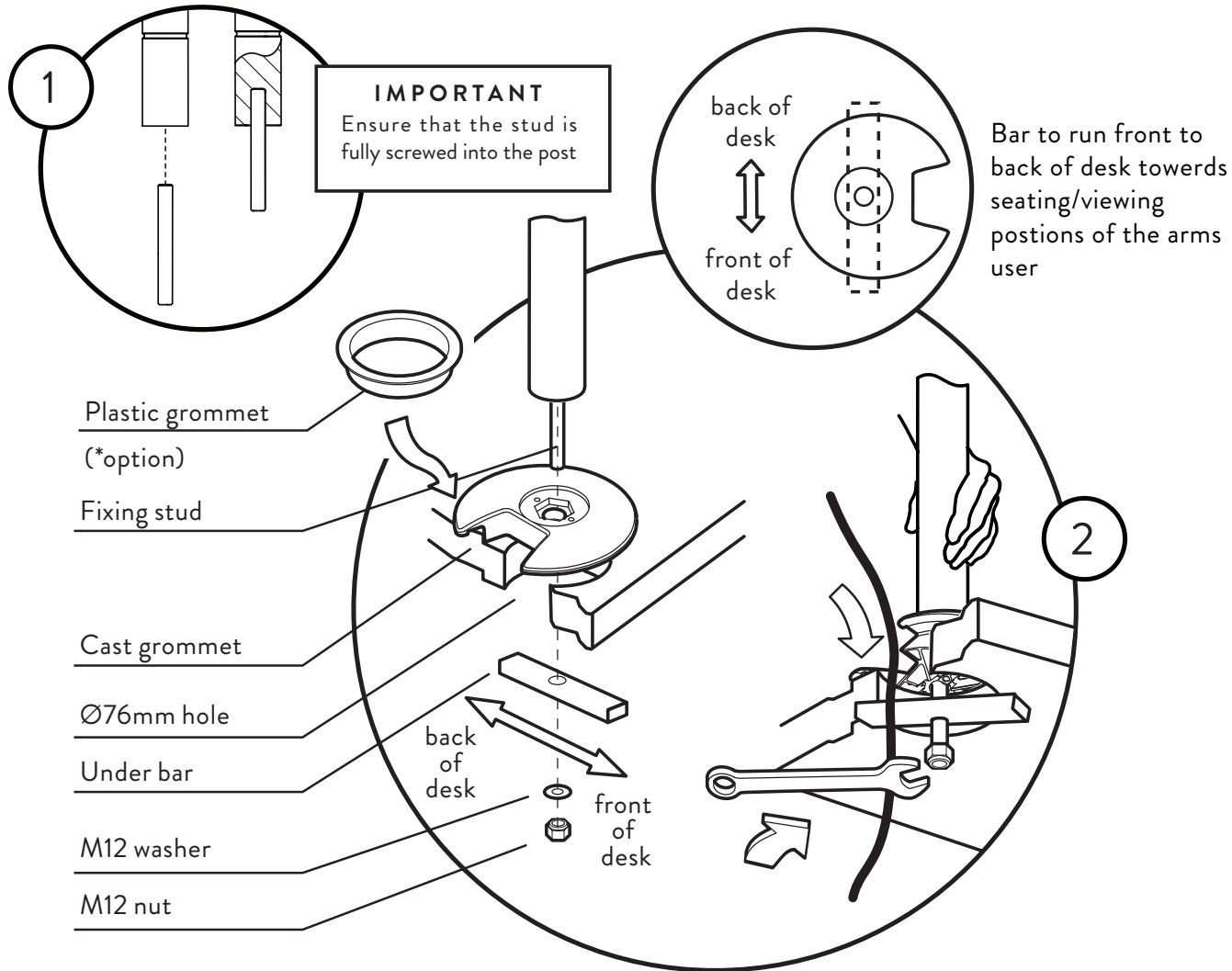


Through Desk Fixing for CBS post

Grommet

UNI/CSG100/K UNI/CSG140/K



⚠ WARNING

- Do not use this product for any purpose other than that for which it was designed.
- Care should be taken to avoid trapping fingers.
- Do not dismantle or modify the screen mounting.
- Supported total weight must not exceed a maximum load of 17Kg (2 screens of 8.5Kg each) when mounted up to 500mm height on a post, or a maximum load of 12.5Kg above 500mm and up to a height of 800mm.

⚠ MAINTENANCE and INSPECTION

- Ensure all screws are tightened and occasionally adjust if needed.
- Clean with a damp cloth, NO solvents.

⚠ DISCLAIMERS

- The use of power tools, lever bars or excessive force during the installation, or re-configuration of the product will invalidate your guarantee.
- Failure to observe the recommendations in the use, and configuration of these products may affect your guarantee.
- As a part of Colebrook Bosson Saunders ongoing product improvement programme the design of products may change without prior notice and details vary from those illustrated

PATENTS

Colebrook Bosson Saunders hold a number of patents and other intellectual property rights covering our products and processes. You can find patent information on our website at: www.colebrookbossonsaunders.com/patents



Please consider leaving these instructions with the product if further installation may be required by others



DO NOT attach the monitor before assembling post

UNI-CSG-INST-H-MAR2018

