

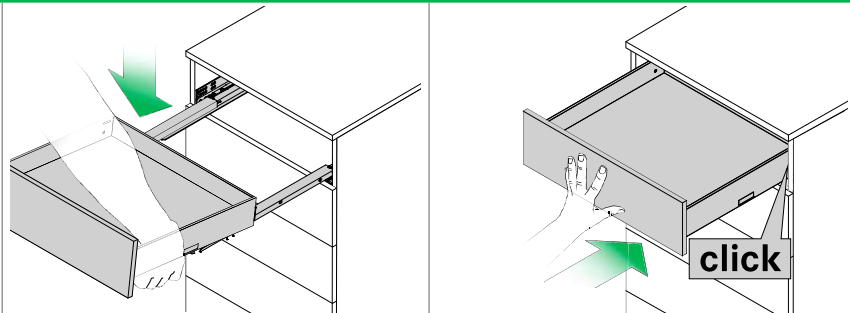
# VIONARO V8

Technical information H72/H89/H121

## INSTALLATION INSTRUCTIONS/REMOVAL INSTRUCTIONS

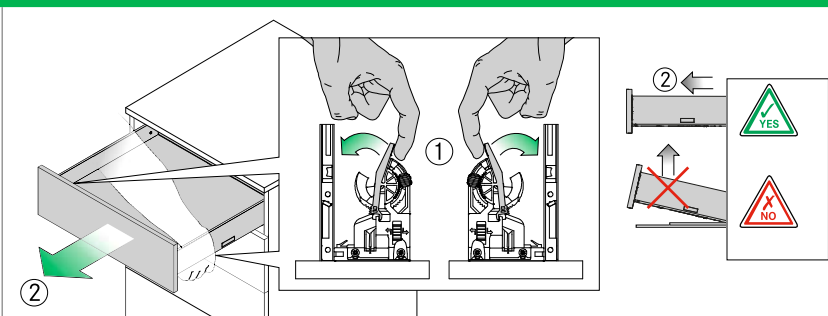
### Inserting the drawer

Place the drawer on the extended slides. Slide the drawer in fully. **The drawer will lock automatically!**



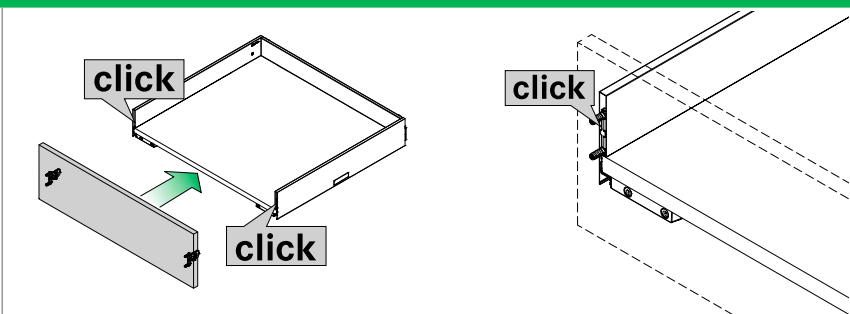
### Removing the drawer

Pull out the drawer, actuate the lever of the front locking device on both sides and pull the drawer forwards, away from the slide.

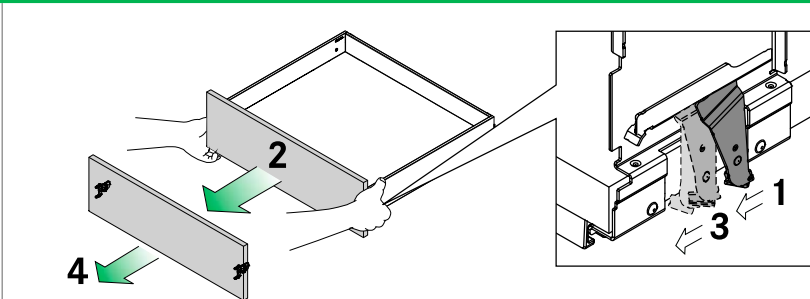


### Front panel assembly

Slide the front holder into the drawer sides. The front panel engages automatically into place and is fixed.



### Front panel removal

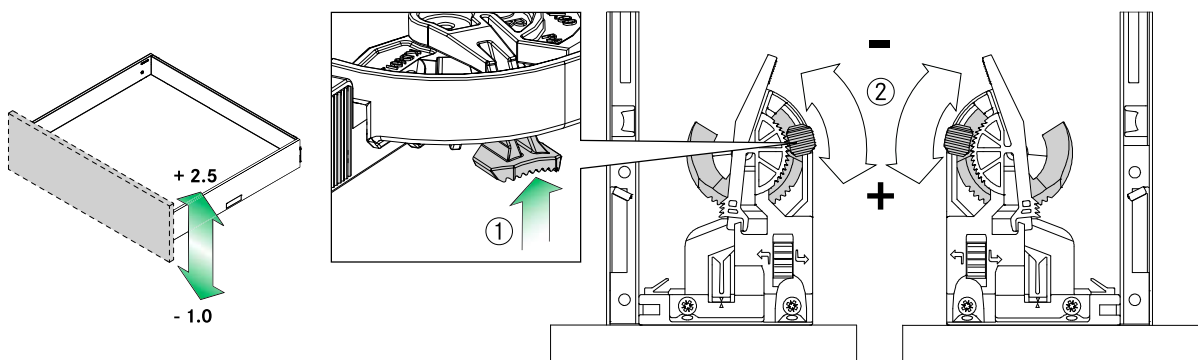


## PAGE REFERENCES

Drawer sides	14	Steel back panels	54	Sensomatic	89
Slides	30	Accessories	66	Assembly technology	109
Inset panels	40	Organising systems	77	Assembly aids	116

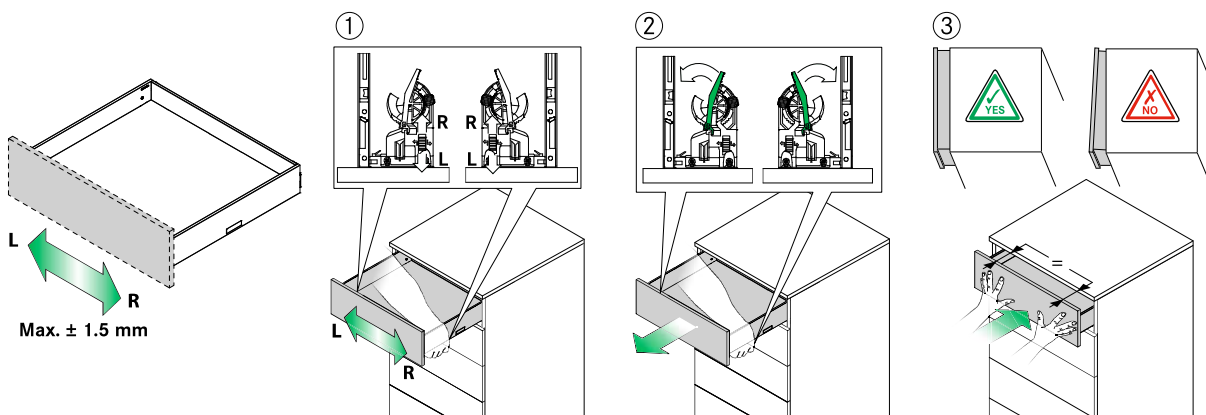
## ADJUSTMENT

### Height adjustment (+2.5/-1 mm)

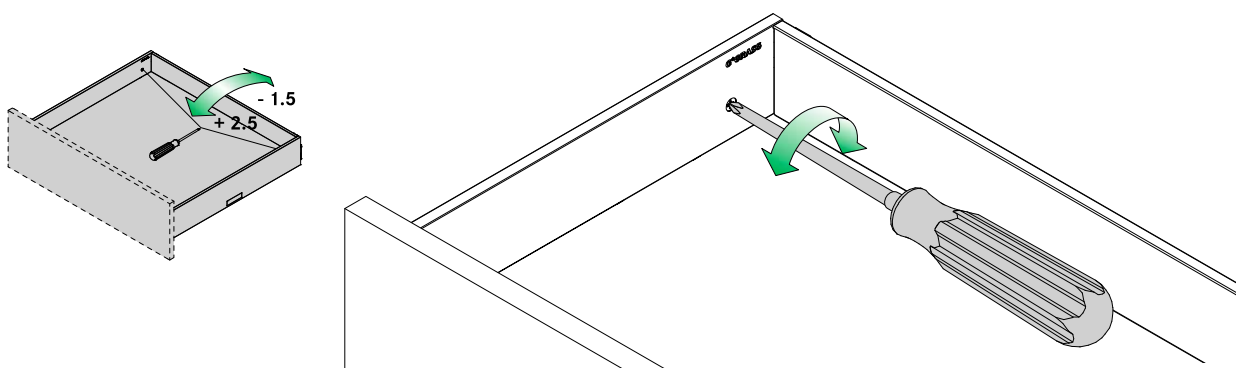


### Side adjustment ( $\pm 1.5$ mm)

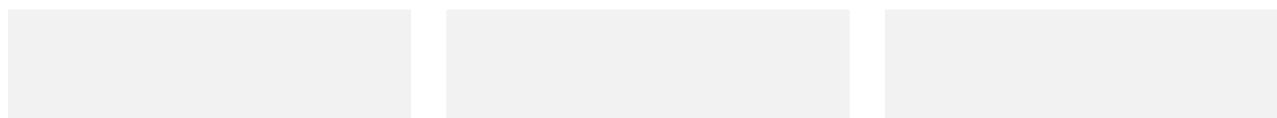
Perform on both sides.



### Tilt angle adjustment (+2.5/-1.5 mm)



## LEGEND



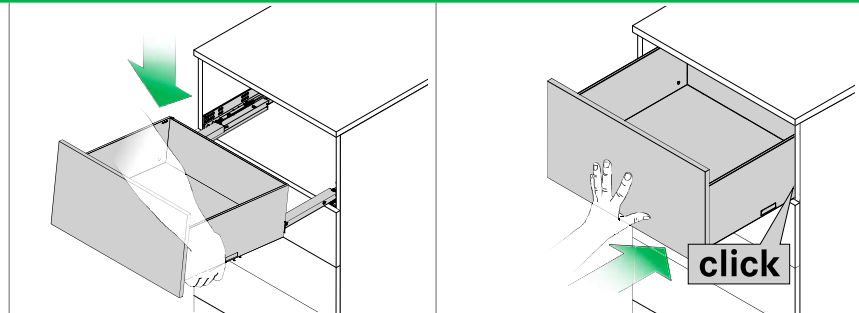
# VIONARO V8

Technical information H200/H250

## INSTALLATION INSTRUCTIONS/REMOVAL INSTRUCTIONS

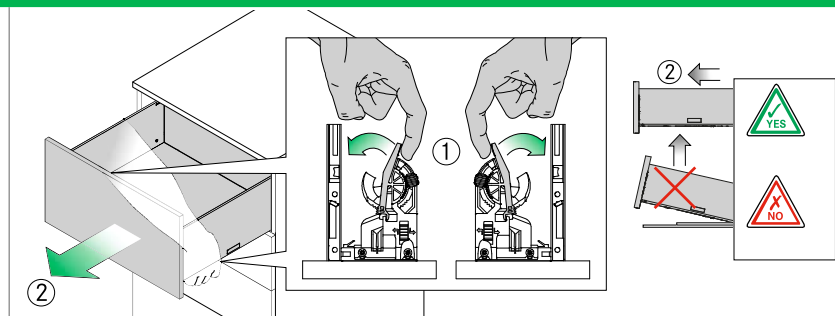
### Inserting the drawer

Place the drawer on the extended slides. Slide the drawer in fully. **The drawer will lock automatically!**



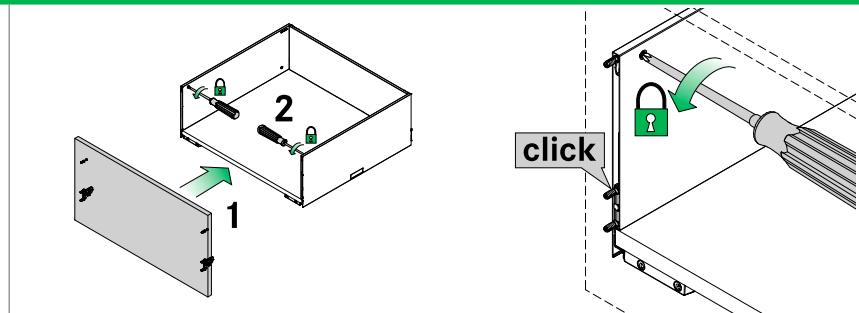
### Removing the drawer

Pull out the drawer, actuate the lever of the front locking device on both sides and pull the drawer forwards, away from the slide.

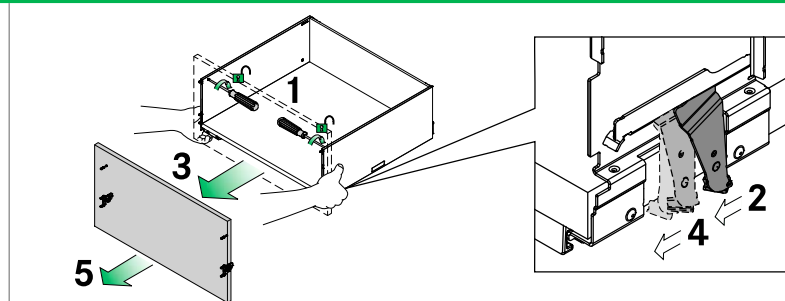


### Front panel assembly

Slide the front holder into the drawer sides. The front panel engages automatically into place and is fixed.



### Front panel removal

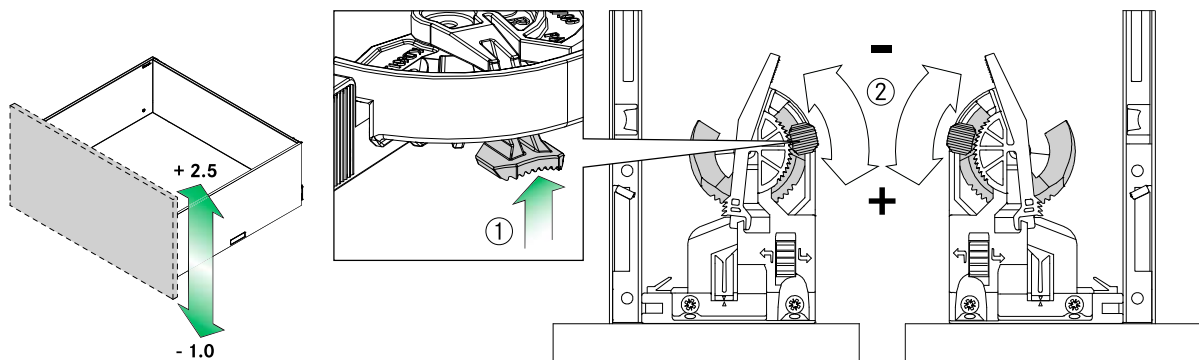


## PAGE REFERENCES

Drawer sides	14	Steel back panels	54	Sensomatic	89
Slides	30	Accessories	66	Assembly technology	109
Inset panels	40	Organising systems	77	Assembly aids	116

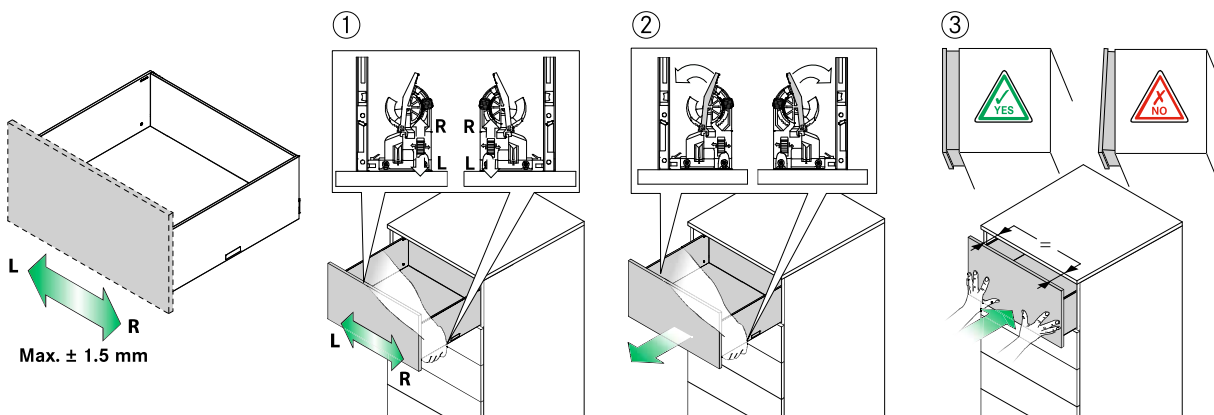
## ADJUSTMENT

### Height adjustment (+2.5/-1 mm)

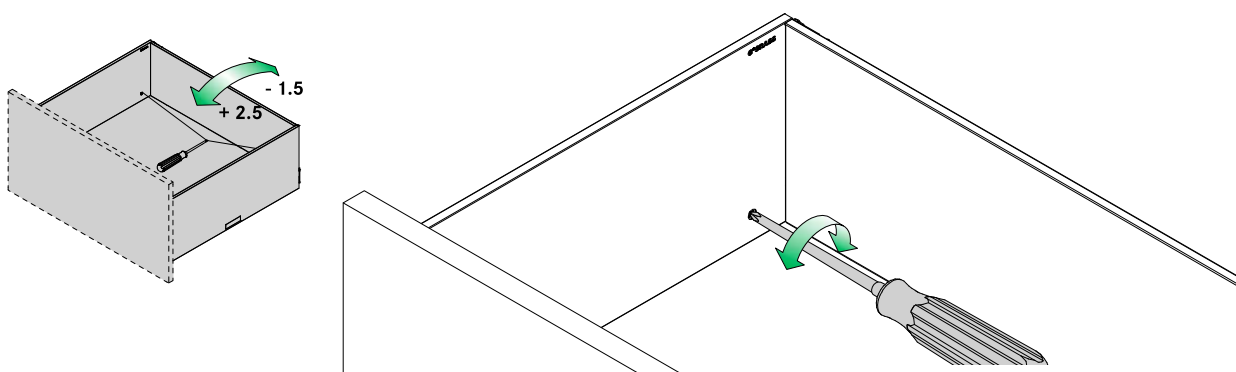


### Side adjustment ( $\pm 1.5$ mm)

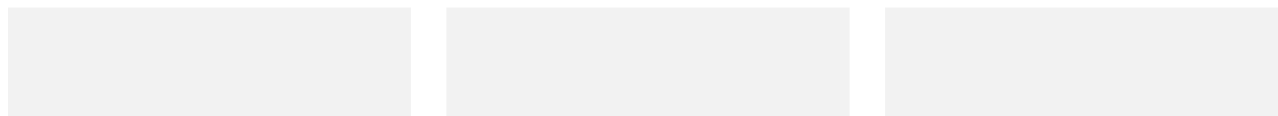
Perform on both sides.



### Tilt angle adjustment (+2.5/-1.5 mm)



## LEGEND



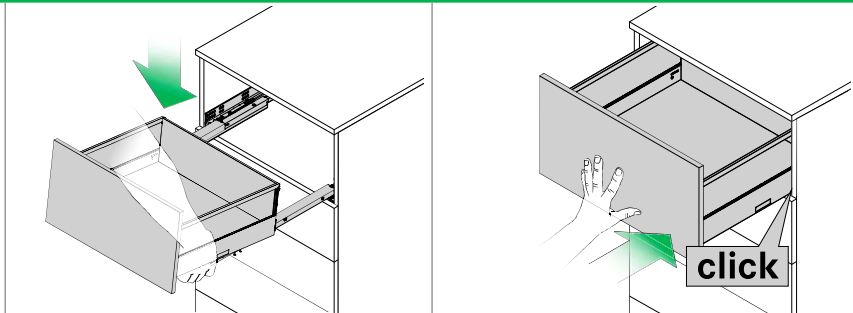
# VIONARO V8

Technical information Crystal H77/H200

## INSTALLATION INSTRUCTIONS/REMOVAL INSTRUCTIONS

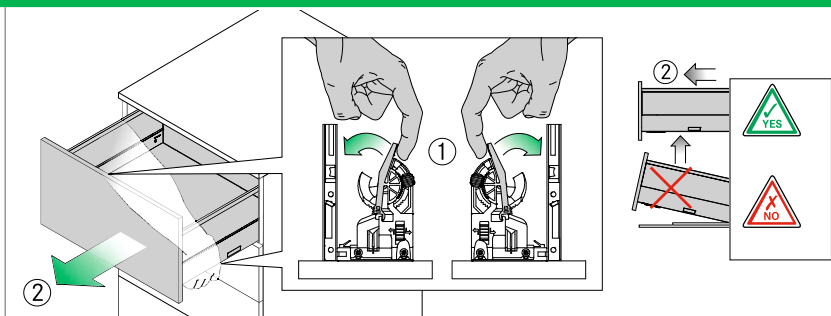
### Inserting the drawer

Place the drawer on the extended slides. Slide the drawer in fully. **The drawer will lock automatically!**



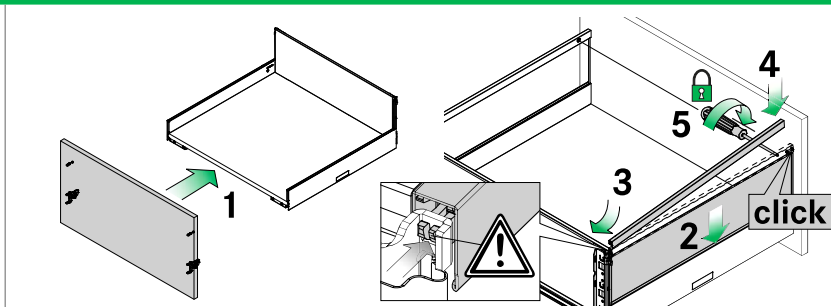
### Removing the drawer

Pull out the drawer, actuate the lever of the front locking device on both sides and pull the drawer forwards, away from the slide.

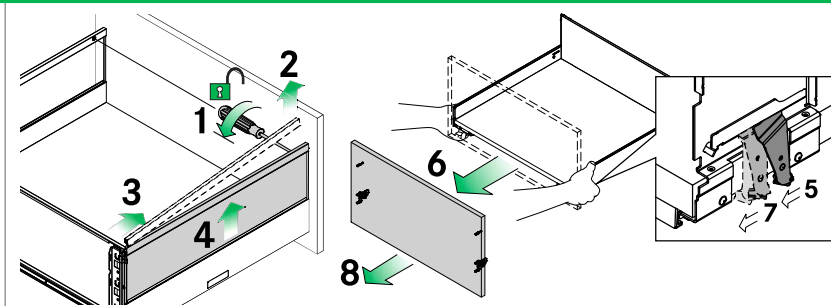


### Front panel assembly

Slide the front holder into the drawer sides. The front panel engages automatically into place and is fixed.



### Front panel removal

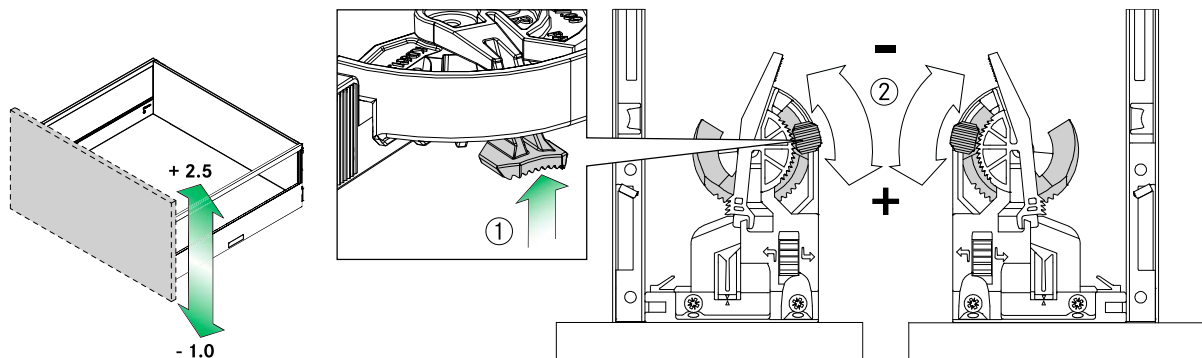


## PAGE REFERENCES

Drawer sides	14	Steel back panels	54	Sensomatic	89
Slides	30	Accessories	66	Assembly technology	109
Inset panels	40	Organising systems	77	Assembly aids	116

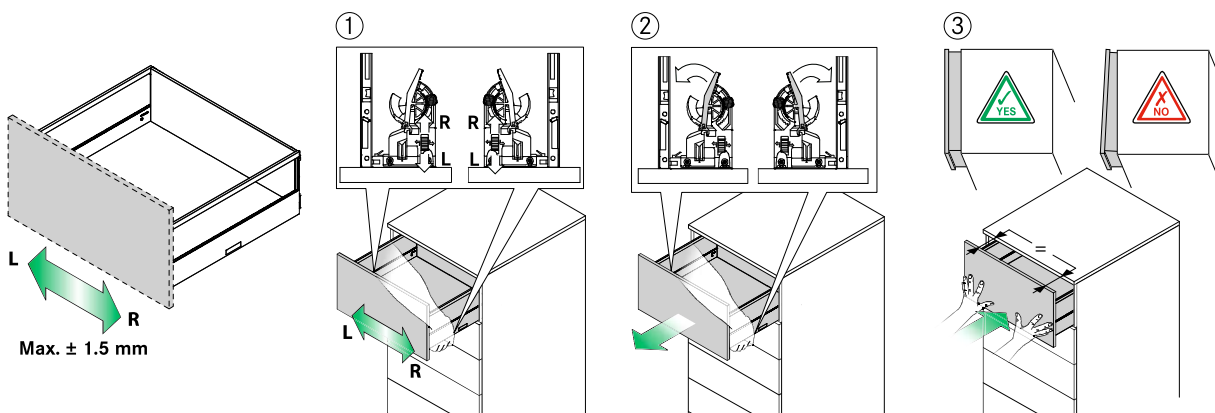
## ADJUSTMENT

### Height adjustment (+2.5/-1 mm)

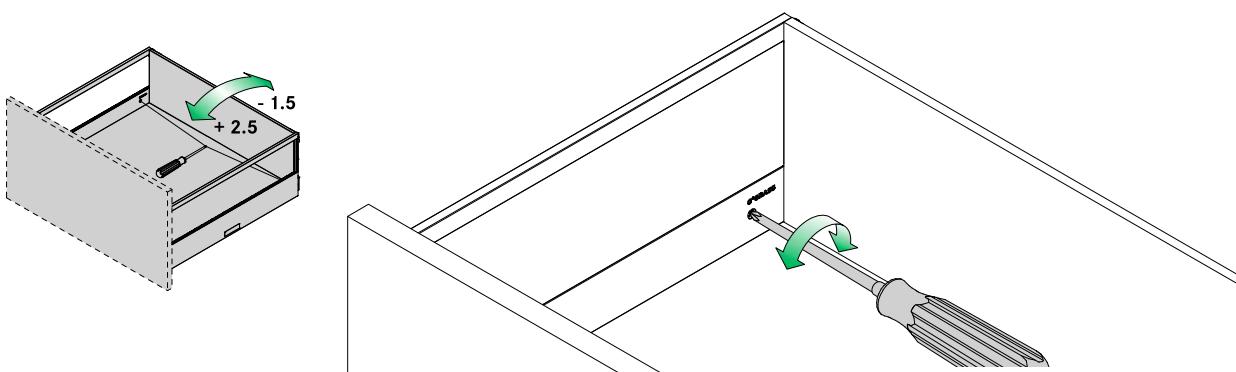


### Side adjustment ( $\pm 1.5$ mm)

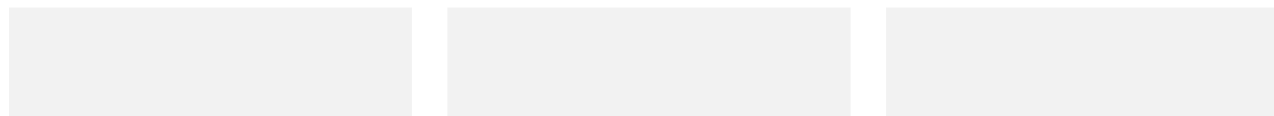
Perform on both sides.



### Tilt angle adjustment (+2.5/-1.5 mm)



## LEGEND

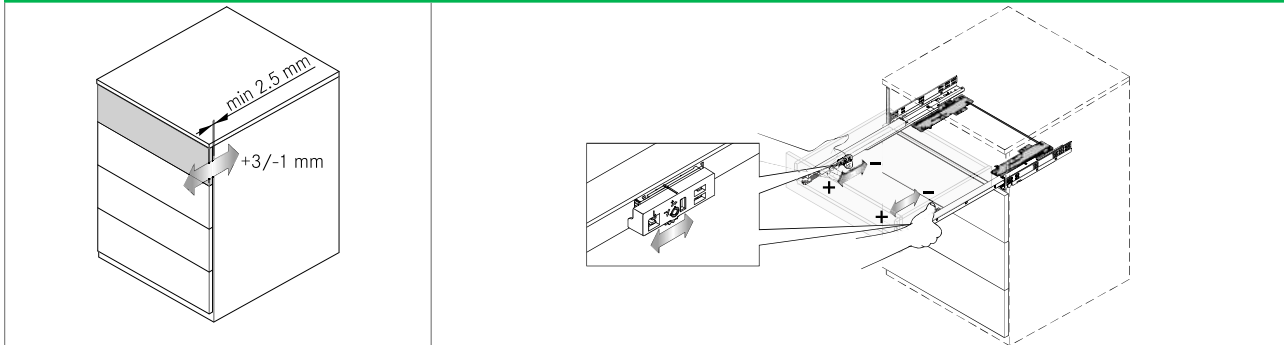


# VIONARO V8

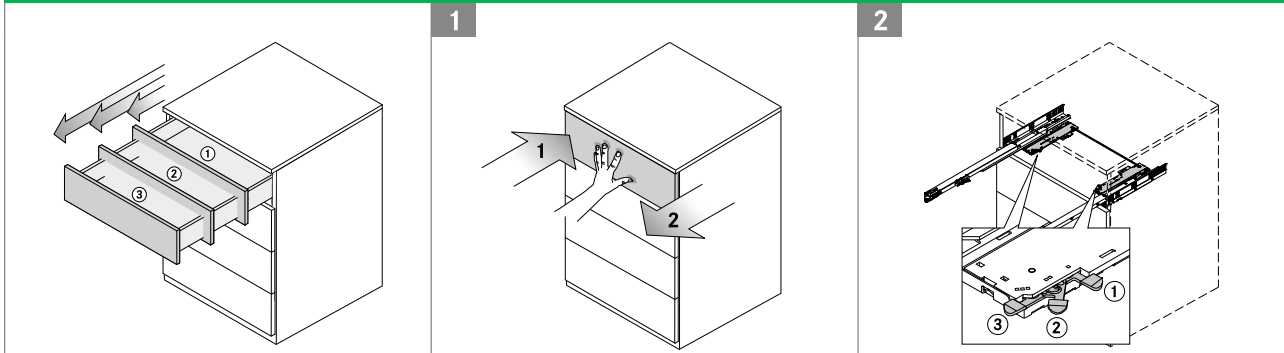
## Technical information

### DYNAPRO TIPMATIC SOFT-CLOSE

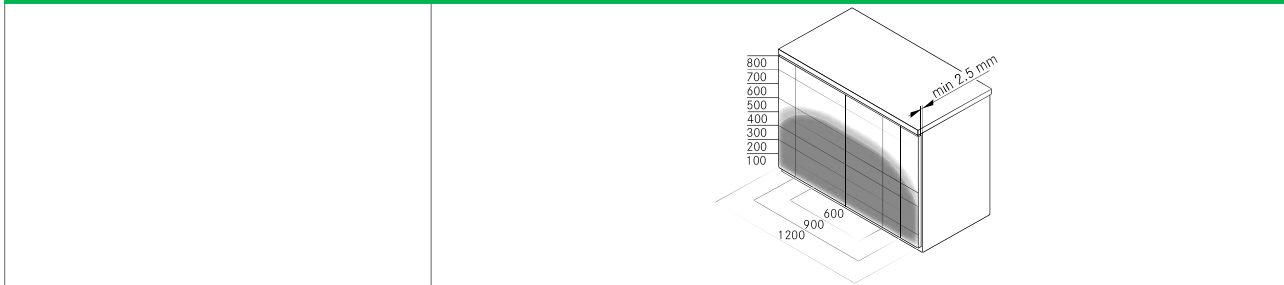
#### Front gap adjustment (+3 mm/-1 mm)



#### Opening force



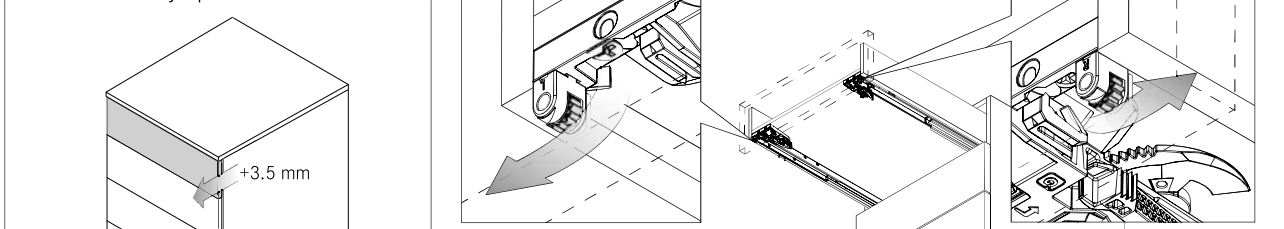
#### Activation zone



### DYNAPRO DEPTH ADJUSTMENT

#### Depth adjustment (max. +3.5 mm)

Can be used with Dynapro Soft-close slides



### PAGE REFERENCES

Drawer sides	14	Steel back panels	54	Sensomatic	89
Slides	30	Accessories	66	Assembly technology	109
Inset panels	40	Organising systems	77	Assembly aids	116